

**Product Name: MAD2L2 Rabbit Monoclonal Antibody**  
**Catalog #: AMRe04088**



## Summary

<b>Production Name</b>	MAD2L2 Rabbit Monoclonal Antibody
<b>Description</b>	Rabbit Monoclonal antibody
<b>Host</b>	Rabbit
<b>Application</b>	WB, ICC/IF, IP
<b>Reactivity</b>	Human

## Performance

<b>Conjugation</b>	Unconjugated
<b>Modification</b>	Unmodified
<b>Isotype</b>	IgG
<b>Clonality</b>	Monoclonal
<b>Form</b>	Liquid
<b>Storage</b>	Store at 4°C short term. Aliquot and store at -20°C long term. Avoid freeze/thaw cycles.
<b>Buffer</b>	50mM Tris-Glycine(pH 7.4), 0.15M NaCl, 40% Glycerol, 0.01% Sodium azide and 0.05% BSA
<b>Purification</b>	Affinity Purification

## Immunogen

<b>Gene Name</b>	MAD2L2
<b>Alternative Names</b>	REV7; FANCV; MAD2B; POLZ2
<b>Gene ID</b>	10459
<b>SwissProt ID</b>	Q9UI95.

## Application

<b>Dilution Ratio</b>	WB: 1:500-1:1000 IF: 1:50-1:200 IP: 1:20
<b>Molecular Weight</b>	Calculated MW: 24 kDa; Observed MW: 24 kDa

## Background

**Product Name: MAD2L2 Rabbit Monoclonal Antibody**  
**Catalog #: AMRe04088**

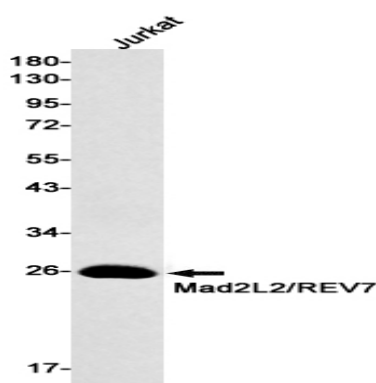


Adapter protein able to interact with different proteins and involved in different biological processes. Mediates the interaction between the error-prone DNA polymerase zeta catalytic subunit REV3L and the inserter polymerase REV1, thereby mediating the second polymerase switching in translesion DNA synthesis.

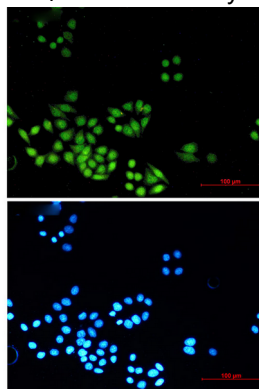
## Research Area

Cell Biology

## Image Data



Western blot analysis of Mad2L2/REV7 in Jurkat lysates using MAD2L2 antibody.



Immunocytochemistry analysis of Mad2L2/REV7 (green) in Hela using Mad2L2/REV7 antibody, and DAPI(blue)

## Note

For research use only.