

**Product Name: Creatine Kinase B type Rabbit
Monoclonal Antibody
Catalog #: AMRe04065**

Summary

Production Name	Creatine Kinase B type Rabbit Monoclonal Antibody
Description	Rabbit Monoclonal antibody
Host	Rabbit
Application	WB,IHC-P,IP
Reactivity	Human,Mouse,Rat

Performance

Conjugation	Unconjugated
Modification	Unmodified
Isotype	IgG
Clonality	Monoclonal
Form	Liquid
Storage	Store at 4°C short term. Aliquot and store at -20°C long term. Avoid freeze/thaw cycles.
Buffer	50mM Tris-Glycine(pH 7.4), 0.15M NaCl, 40% Glycerol, 0.01% Sodium azide and 0.05% BSA
Purification	Affinity Purification

Immunogen

Gene Name	CKB
Alternative Names	BCK; Ckb; CKBB; HEL 211; HEL S 29
Gene ID	1152
SwissProt ID	P12277.

Application

Dilution Ratio	WB: 1:500-1:1000 IHC: 1:50-1:100 IP: 1:20
Molecular Weight	Calculated MW: 43 kDa; Observed MW: 43 kDa

**Product Name: Creatine Kinase B type Rabbit
Monoclonal Antibody**
Catalog #: AMRe04065



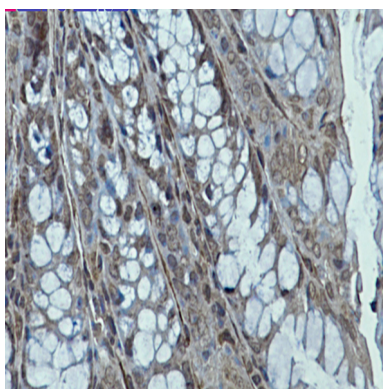
Background

Reversibly catalyzes the transfer of phosphate between ATP and various phosphogens (e.g. creatine phosphate). Creatine kinase isoenzymes play a central role in energy transduction in tissues with large, fluctuating energy demands, such as skeletal muscle, heart, brain and spermatozoa.

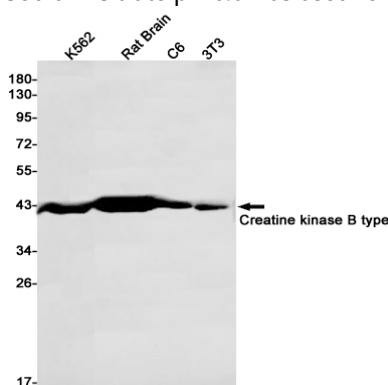
Research Area

Neuroscience

Image Data



Immunohistochemistry analysis of paraffin-embedded mouse colon using Creatine Kinase B type antibody. High-pressure and temperature Sodium Citrate pH 6.0 was used for antigen retrieval.



Western blot analysis of Creatine kinase B type in K562, rat Brain, C6, 3T3 lysates using Creatine kinase B type antibody.

Note

For research use only.