

**Product Name: Cyclin B1 Rabbit Monoclonal Antibody**  
**Catalog #: AMRe04051**



## Summary

<b>Production Name</b>	Cyclin B1 Rabbit Monoclonal Antibody
<b>Description</b>	Rabbit Monoclonal antibody
<b>Host</b>	Rabbit
<b>Application</b>	WB, ICC/IF, IP
<b>Reactivity</b>	Human

## Performance

<b>Conjugation</b>	Unconjugated
<b>Modification</b>	Unmodified
<b>Isotype</b>	IgG
<b>Clonality</b>	Monoclonal
<b>Form</b>	Liquid
<b>Storage</b>	Store at 4°C short term. Aliquot and store at -20°C long term. Avoid freeze/thaw cycles.
<b>Buffer</b>	50mM Tris-Glycine(pH 7.4), 0.15M NaCl, 40% Glycerol, 0.01% Sodium azide and 0.05% BSA
<b>Purification</b>	Affinity Purification

## Immunogen

<b>Gene Name</b>	CCNB1
<b>Alternative Names</b>	CCNB1; CCNB; G2/mitotic-specific cyclin-B1
<b>Gene ID</b>	891
<b>SwissProt ID</b>	P14635.

## Application

<b>Dilution Ratio</b>	WB: 1:500-1:1000 IF: 1:50-1:200 IP: 1:20
<b>Molecular Weight</b>	Calculated MW: 48 kDa; Observed MW: 55 kDa

## Background

**Product Name: Cyclin B1 Rabbit Monoclonal Antibody**  
**Catalog #: AMRe04051**

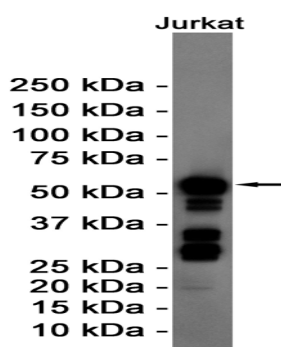


Essential for the control of the cell cycle at the G2/M (mitosis) transition. a member of the highly conserved cyclin family, whose members are characterized by a dramatic periodicity in protein abundance through the cell cycle. Cyclins function as regulators of CDK kinases.

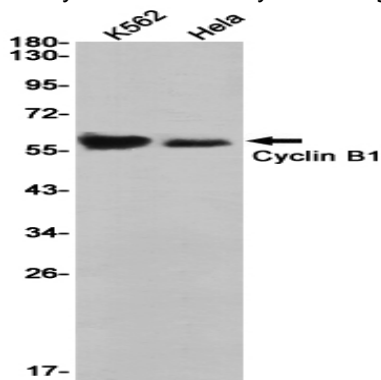
## Research Area

Cell Biology

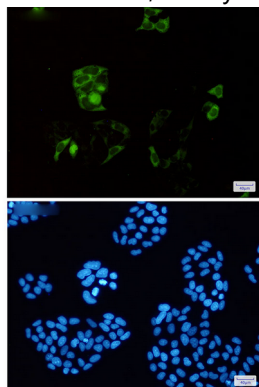
## Image Data



Western blot analysis of Cyclin B1 in Jurkat lysates using Cyclin B1 antibody.



Western blot analysis of Cyclin B1 in K562, HeLa lysates using Cyclin B1 antibody.



Immunocytochemistry analysis of Cyclin B1(green) in HeLa using Cyclin B1 antibody,and DAPI(blue)

**Product Name: Cyclin B1 Rabbit Monoclonal Antibody**  
**Catalog #: AMRe04051**

---



**Note**

For research use only.