

Product Name: TAF15 Rabbit Monoclonal Antibody
Catalog #: AMRe04036



Summary

Production Name	TAF15 Rabbit Monoclonal Antibody
Description	Rabbit Monoclonal antibody
Host	Rabbit
Application	WB,IHC-F,IHC-P,ICC/IF
Reactivity	Human,Mouse,Rat

Performance

Conjugation	Unconjugated
Modification	Unmodified
Isotype	IgG
Clonality	Monoclonal
Form	Liquid
Storage	Store at 4°C short term. Aliquot and store at -20°C long term. Avoid freeze/thaw cycles.
Buffer	50mM Tris-Glycine(pH 7.4), 0.15M NaCl, 40% Glycerol, 0.01% Sodium azide and 0.05% BSA
Purification	Affinity Purification

Immunogen

Gene Name	TAF15
Alternative Names	TAF15; RBP56; TAF2N; TATA-binding protein-associated factor 2N; 68 kDa TATA-binding protein-associated factor; TAF(II)68; TAFII68; RNA-binding protein 56
Gene ID	8148
SwissProt ID	Q92804.

Application

Dilution Ratio	WB: 1:500-1:1000 IHC: 1:50-1:100 IF: 1:50-1:200
Molecular Weight	Calculated MW: 62 kDa; Observed MW: 77 kDa

Product Name: TAF15 Rabbit Monoclonal Antibody
Catalog #: AMRe04036



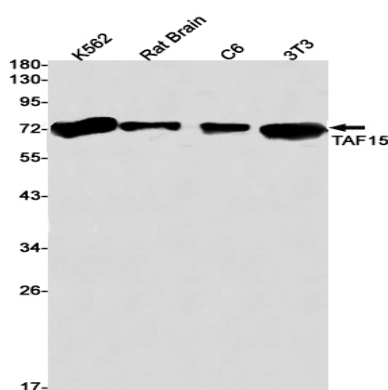
Background

RNA and ssDNA-binding protein that may play specific roles during transcription initiation at distinct promoters. Can enter the preinitiation complex together with the RNA polymerase II (Pol II).

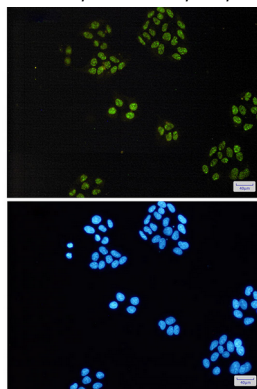
Research Area

Epigenetics and Nuclear Signaling

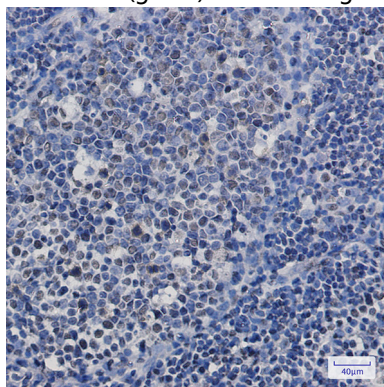
Image Data



Western blot analysis of TAF15 in K562, rat Brain, C6, 3T3 lysates using TAF15 antibody.



Immunocytochemistry analysis of TAF15(green) in HeLa using TAF15 antibody, and DAPI(blue)



Immunohistochemistry analysis of paraffin-embedded Human tonsil using TAF15 antibody. High-pressure and temperature

Product Name: TAF15 Rabbit Monoclonal Antibody
Catalog #: AMRe04036



Sodium Citrate pH 6.0 was used for antigen retrieval.

Note

For research use only.