

**Product Name: S100 alpha 6/PRA Rabbit Monoclonal Antibody**  
**Catalog #: AMRe04004**

---



## Summary

<b>Production Name</b>	S100 alpha 6/PRA Rabbit Monoclonal Antibody
<b>Description</b>	Rabbit Monoclonal antibody
<b>Host</b>	Rabbit
<b>Application</b>	WB,IHC-F,IHC-P,ICC/IF
<b>Reactivity</b>	Human

## Performance

<b>Conjugation</b>	Unconjugated
<b>Modification</b>	Unmodified
<b>Isotype</b>	IgG
<b>Clonality</b>	Monoclonal
<b>Form</b>	Liquid
<b>Storage</b>	Store at 4°C short term. Aliquot and store at -20°C long term. Avoid freeze/thaw cycles.
<b>Buffer</b>	Liquid in 50mM Tris-Glycine(pH 7.4), 0.15M NaCl, 40%Glycerol, 0.01% sodium azide and 0.05% BSA.
<b>Purification</b>	Affinity Purification

## Immunogen

<b>Gene Name</b>	S100A6
<b>Alternative Names</b>	S100 alpha6; Protein S100-A6; Calcyclin; MLN 4; PRA; CACY; CABP; 5B10
<b>Gene ID</b>	6277
<b>SwissProt ID</b>	P06703.

## Application

<b>Dilution Ratio</b>	WB: 1:500-1:1000 IHC: 1:50-1:100 IF: 1:50-1:200
<b>Molecular Weight</b>	Calculated MW:10 kDa;Observed MW: 10 kDa

## Background

---

**Product Name: S100 alpha 6/PRA Rabbit Monoclonal Antibody**  
**Catalog #: AMRe04004**

---

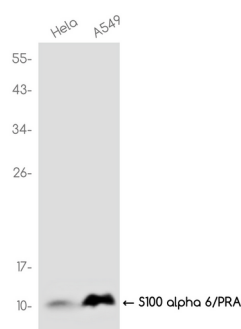


S100A6 (calcylin) is involved in a number of cellular processes, including exocytosis and cell cycle regulation. In addition, S100A6 interacts with a number of proteins such as SIP, GAPDH, and annexins in a calcium-dependent fashion. Research studies demonstrate that a down regulation of corresponding S100A6 gene expression causes a decrease in cell proliferation.

## Research Area

Cell Biology

## Image Data



Western blot analysis of S100 alpha 6/PRA in HeLa, A549 lysates using S100 alpha 6/PRA antibody.

## Note

For research use only.