

Product Name: Lyn Rabbit Monoclonal Antibody
Catalog #: AMRe03992



Summary

Production Name	Lyn Rabbit Monoclonal Antibody
Description	Rabbit Monoclonal antibody
Host	Rabbit
Application	WB
Reactivity	Human, Mouse, Rat

Performance

Conjugation	Unconjugated
Modification	Unmodified
Isotype	IgG
Clonality	Monoclonal
Form	Liquid
Storage	Store at 4°C short term. Aliquot and store at -20°C long term. Avoid freeze/thaw cycles.
Buffer	Liquid in 50mM Tris-Glycine(pH 7.4), 0.15M NaCl, 40%Glycerol, 0.01% sodium azide and 0.05% BSA.
Purification	Affinity Purification

Immunogen

Gene Name	LYN
Alternative Names	LYN; JTK8; Tyrosine-protein kinase Lyn; Lck/Yes-related novel protein tyrosine kinase; V-yes-1 Yamaguchi sarcoma viral related oncogene homolog; p53Lyn; p56Lyn
Gene ID	4067
SwissProt ID	P07948.

Application

Dilution Ratio	WB: 1:500-1:1000
Molecular Weight	Calculated MW:59 kDa;Observed MW: 59 kDa

Background

Product Name: Lyn Rabbit Monoclonal Antibody
Catalog #: AMRe03992

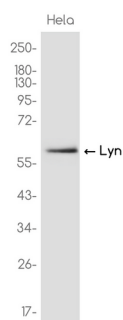


Lyn a tyrosine kinase of the Src family that plays a role in B cell antigen-receptor signaling.

Research Area

Signal Transduction

Image Data



Western blot analysis of Lyn in HeLa lysates using Lyn antibody.

Note

For research use only.