

**Product Name: GRB7 Rabbit Monoclonal Antibody**  
**Catalog #: AMRe03957**



## Summary

|                        |                                 |
|------------------------|---------------------------------|
| <b>Production Name</b> | GRB7 Rabbit Monoclonal Antibody |
| <b>Description</b>     | Rabbit Monoclonal antibody      |
| <b>Host</b>            | Rabbit                          |
| <b>Application</b>     | WB,IHC-F,IHC-P                  |
| <b>Reactivity</b>      | Human                           |

## Performance

|                     |   |
|---------------------|---|
| <b>Conjugation</b>  | Unconjugated  |
| <b>Modification</b> | Unmodified  |
| <b>Isotype</b>      | IgG   |
| <b>Clonality</b>    | Monoclonal  |
| <b>Form</b>         | Liquid  |
| <b>Storage</b>      | Store at 4°C short term. Aliquot and store at -20°C long term. Avoid freeze/thaw cycles.        |
| <b>Buffer</b>       | Liquid in 50mM Tris-Glycine(pH 7.4), 0.15M NaCl, 40%Glycerol, 0.01% sodium azide and 0.05% BSA. |
| <b>Purification</b> | Affinity Purification   |

## Immunogen

|                          |   |
|--------------------------|---|
| <b>Gene Name</b>         | GRB7  |
| <b>Alternative Names</b> | B47; Epidermal growth factor receptor GRB 7; GRB7 adapter protein; GRB7 |
| <b>Gene ID</b>           | 2886  |
| <b>SwissProt ID</b>      | Q14451.   |

## Application

|                         |  |
|-------------------------|--|
| <b>Dilution Ratio</b>   | WB: 1:500-1:1000 IHC: 1:50-1:100         |
| <b>Molecular Weight</b> | Calculated MW:60 kDa;Observed MW: 60 kDa |

## Background

Interacts with the cytoplasmic domain of the epidermal growth factor receptor which is then inhibited. The interaction is

**Product Name: GRB7 Rabbit Monoclonal Antibody**  
**Catalog #: AMRe03957**

---

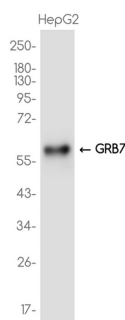


mediated by the SH2 domain. Also binds to ERBB2.

## Research Area

Signal Transduction

## Image Data



Western blot analysis of GRB7 in HepG2 lysates using GRB7 antibody.

## Note

For research use only.