

Product Name: Nucleolin Rabbit Monoclonal Antibody
Catalog #: AMRe03942



Summary

Production Name	Nucleolin Rabbit Monoclonal Antibody
Description	Rabbit Monoclonal antibody
Host	Rabbit
Application	WB,IHC-F,IHC-P,ICC/IF,FC
Reactivity	Human, Mouse, Rat

Performance

Conjugation	Unconjugated
Modification	Unmodified
Isotype	IgG
Clonality	Monoclonal
Form	Liquid
Storage	Store at 4°C short term. Aliquot and store at -20°C long term. Avoid freeze/thaw cycles.
Buffer	Liquid in 50mM Tris-Glycine(pH 7.4), 0.15M NaCl, 40%Glycerol, 0.01% sodium azide and 0.05% BSA.
Purification	Affinity Purification

Immunogen

Gene Name	NCL
Alternative Names	C23; Nsr1
Gene ID	4691
SwissProt ID	P19338.

Application

Dilution Ratio	WB: 1:500-1:1000 IHC: 1:50-1:100 IF: 1:50-1:200 FC: 1:50-1:100
Molecular Weight	Calculated MW:77 kDa;Observed MW: 100 kDa

Background

Nucleolin is the major nucleolar protein of growing eukaryotic cells. It is found associated with intranucleolar chromatin

Product Name: Nucleolin Rabbit Monoclonal Antibody
Catalog #: AMRe03942

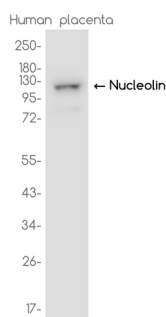


and pre-ribosomal particles. It induces chromatin decondensation by binding to histone H1. It is thought to play a role in pre-rRNA transcription and ribosome assembly. May play a role in the process of transcriptional elongation. Binds RNA oligonucleotides with 5'-UUAGGG-3' repeats more tightly than the telomeric single-stranded DNA 5'-TTAGGG-3' repeats.

Research Area

Tags & Cell Markers

Image Data



Western blot analysis of Nucleolin in Human placenta lysates using Nucleolin antibody.

Note

For research use only.