

**Product Name: SETD7 Rabbit Monoclonal Antibody**  
**Catalog #: AMRe03932**



## Summary

<b>Production Name</b>	SETD7 Rabbit Monoclonal Antibody
<b>Description</b>	Rabbit Monoclonal antibody
<b>Host</b>	Rabbit
<b>Application</b>	WB,IP
<b>Reactivity</b>	Human, Mouse, Rat

## Performance

<b>Conjugation</b>	Unconjugated
<b>Modification</b>	Unmodified
<b>Isotype</b>	IgG
<b>Clonality</b>	Monoclonal
<b>Form</b>	Liquid
<b>Storage</b>	Store at 4°C short term. Aliquot and store at -20°C long term. Avoid freeze/thaw cycles.
<b>Buffer</b>	Liquid in 50mM Tris-Glycine(pH 7.4), 0.15M NaCl, 40%Glycerol, 0.01% sodium azide and 0.05% BSA.
<b>Purification</b>	Affinity Purification

## Immunogen

<b>Gene Name</b>	SETD7
<b>Alternative Names</b>	Histone H3-K4 methyltransferase SETD7; Lysine N-methyltransferase 7; SET domain-containing protein 7; SET7; SET9
<b>Gene ID</b>	80854.0
<b>SwissProt ID</b>	Q8WTS6.

## Application

<b>Dilution Ratio</b>	WB: 1:500-1:1000 IP: 1:20
<b>Molecular Weight</b>	Calculated MW:41 kDa;Observed MW: 41,50 kDa

## Background

**Product Name: SETD7 Rabbit Monoclonal Antibody**  
**Catalog #: AMRe03932**

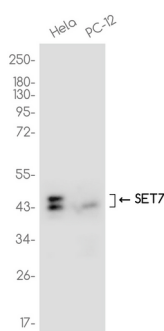


Histone methyltransferase that specifically monomethylates 'Lys-4' of histone H3. H3 'Lys-4' methylation represents a specific tag for epigenetic transcriptional activation. Plays a central role in the transcriptional activation of genes such as collagenase or insulin. Recruited by IPF1/PDX-1 to the insulin promoter, leading to activate transcription.

## Research Area

Epigenetics and Nuclear Signaling

## Image Data



Western blot analysis of SETD7 in HeLa, PC-12 lysates using SETD7 antibody.

## Note

For research use only.