

Summary

Production Name	IL-12A Rabbit Monoclonal Antibody
Description	Rabbit Monoclonal antibody
Host	Rabbit
Application	WB,IHC-F,IHC-P,FC
Reactivity	Human, Mouse

Performance

Conjugation	Unconjugated
Modification	Unmodified
Isotype	IgG
Clonality	Monoclonal
Form	Liquid
Storage	Store at 4°C short term. Aliquot and store at -20°C long term. Avoid freeze/thaw cycles.
Buffer	Liquid in 50mM Tris-Glycine(pH 7.4), 0.15M NaCl, 40%Glycerol, 0.01% sodium azide and 0.05% BSA.
Purification	Affinity Purification

Immunogen

Gene Name	IL12A
Alternative Names	IL12A;Interleukin-12 subunit alpha, IL-12 subunit p35, IL-12A, Cytotoxic Lymphocyte Maturation Factor 35 kDa;NK cell stimulatory factor chain 1 ;NKSF1;
Gene ID	3592.0
SwissProt ID	P29459.

Application

Dilution Ratio	WB: 1:500-1:1000 IHC: 1:50-1:100 FC: 1:50-1:100
Molecular Weight	Calculated MW:25 kDa;Observed MW: 35 kDa

Background

Product Name: IL-12A Rabbit Monoclonal Antibody
Catalog #: AMRe03919

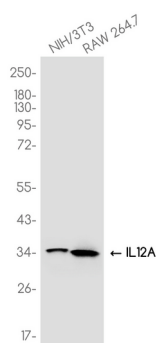


Heterodimerizes with IL12B to form the IL-12 cytokine or with EBI3/IL27B to form the IL-35 cytokine .IL-12 is primarily produced by professional antigen-presenting cells (APCs) such as B-cells and dendritic cells (DCs) as well as macrophages and granulocytes and regulates T-cell and natural killer-cell responses, induces the production of interferon-gamma (IFN-gamma), favors the differentiation of T-helper 1 (Th1) cells and is an important link between innate resistance and adaptive immunity .

Research Area

Immunology

Image Data



Western blot analysis of IL-12A in NIH3T3, Raw 264.7 lysates using IL-12A antibody.

Note

For research use only.