

**Product Name: IRF5 Rabbit Monoclonal Antibody**  
**Catalog #: AMRe03898**



## Summary

<b>Production Name</b>	IRF5 Rabbit Monoclonal Antibody
<b>Description</b>	Rabbit Monoclonal antibody
<b>Host</b>	Rabbit
<b>Application</b>	WB,IHC-P,ICC/IF,FC,IP
<b>Reactivity</b>	Human,Mouse,Rat

## Performance

<b>Conjugation</b>	Unconjugated
<b>Modification</b>	Unmodified
<b>Isotype</b>	IgG
<b>Clonality</b>	Monoclonal
<b>Form</b>	Liquid
<b>Storage</b>	Store at 4°C short term. Aliquot and store at -20°C long term. Avoid freeze/thaw cycles.
<b>Buffer</b>	Rabbit IgG in phosphate buffered saline , pH 7.4, 150mM NaCl, 0.02% sodium azide and 50% glycerol.
<b>Purification</b>	Affinity Chromatography

## Immunogen

<b>Gene Name</b>	IRF5
<b>Alternative Names</b>	Interferon regulatory factor 5; Interferon regulatory factor 5 bone marrow variant; IRF 5; SLEB10
<b>Gene ID</b>	3663
<b>SwissProt ID</b>	Q13568.

## Application

<b>Dilution Ratio</b>	WB: 1:500-1:1000 IHC: 1:50-1:100 IF: 1:50-1:200 IP: 1:100 FC: 1:50-1:100
<b>Molecular Weight</b>	Calculated MW: 56 kDa; Observed MW: 56 kDa

## Background

**Product Name: IRF5 Rabbit Monoclonal Antibody**  
**Catalog #: AMRe03898**

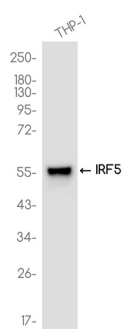


Play an important role in pathogen defense, autoimmunity, lymphocyte development, cell growth, and susceptibility to transformation. Studies have shown that genetic variants of IRF-5 have been associated with disorders where the IFN pathway is abnormally activated, such as systemic lupus erythematosus.

## Research Area

Immunology

## Image Data



Western blot analysis of IRF5 in THP-1 lysates using IRF5 antibody.

## Note

For research use only.