

**Product Name: Phospho-STAT1 (Ser727) Rabbit  
Monoclonal antibody  
Catalog #: AMRe03797**

---

## Summary

<b>Production Name</b>	Phospho-STAT1 (Ser727) Rabbit Monoclonal antibody
<b>Description</b>	Recombinant Rabbit Monoclonal antibody
<b>Host</b>	Rabbit
<b>Application</b>	WB,IHC-P
<b>Reactivity</b>	Human,Mouse,Rat

## Performance

<b>Conjugation</b>	Unconjugated
<b>Modification</b>	Phosphorylated
<b>Isotype</b>	IgG
<b>Clonality</b>	Monoclonal Antibody
<b>Form</b>	Liquid
<b>Storage</b>	Store at 4°C short term. Aliquot and store at -20°C long term. Avoid freeze/thaw cycles.
<b>Buffer</b>	50mM Tris-Glycine(pH 7.4), 0.15M NaCl, 40% Glycerol, 0.01% Sodium azide and 0.05% BSA
<b>Purification</b>	Affinity Purified

## Immunogen

<b>Gene Name</b>	STAT1
<b>Alternative Names</b>	STAT1; Signal transducer and activator of transcription 1-alpha/beta; Transcription factor ISGF-3 components p91/p84
<b>Gene ID</b>	6772
<b>SwissProt ID</b>	P42224.

## Application

<b>Dilution Ratio</b>	WB: 1:500-1:1000 IHC: 1:50-1:100
<b>Molecular Weight</b>	Calculated MW: 87 kDa; Observed MW: 87 kDa

**Product Name: Phospho-STAT1 (Ser727) Rabbit  
Monoclonal antibody  
Catalog #: AMRe03797**



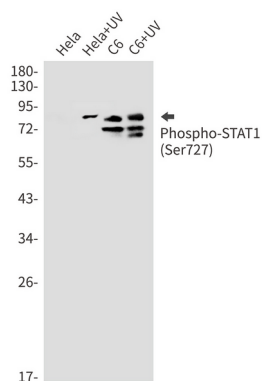
## Background

The protein encoded by this gene is a member of the STAT protein family. In response to cytokines and growth factors, STAT family members are phosphorylated by the receptor associated kinases, and then form homo- or heterodimers that translocate to the cell nucleus where they act as transcription activators.

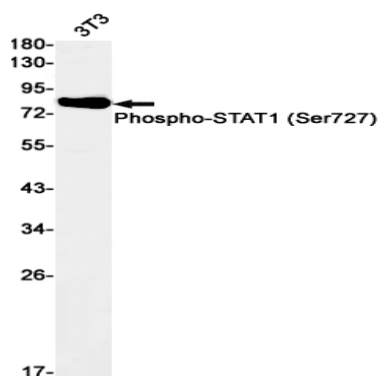
## Research Area

Signal Transduction

## Image Data



Western blot analysis of Phospho-STAT1 (Ser727) in HeLa, HeLa+UV, C6, C6+UV lysates using Phospho-STAT1 (Ser727) antibody.



Western blot analysis of Phospho-STAT1 (Ser727) in 3T3 lysates using Phospho-STAT1 (Ser727) antibody.

## Note

For research use only.