

Product Name: Smad2 Rabbit Monoclonal antibody
Catalog #: AMRe03795



Summary

Production Name	Smad2 Rabbit Monoclonal antibody
Description	Recombinant Rabbit Monoclonal antibody
Host	Rabbit
Application	WB,IHC-F,IHC-P,ICC/IF,IP
Reactivity	Human,Rat,Hamster

Performance

Conjugation	Unconjugated
Modification	Unmodified
Isotype	IgG
Clonality	Monoclonal Antibody
Form	Liquid
Storage	Store at 4°C short term. Aliquot and store at -20°C long term. Avoid freeze/thaw cycles.
Buffer	50mM Tris-Glycine(pH 7.4), 0.15M NaCl, 40% Glycerol, 0.01% Sodium azide and 0.05% BSA
Purification	Affinity Purified

Immunogen

Gene Name	SMAD2
Alternative Names	SMAD2; MADH2; MADR2; Mothers against decapentaplegic homolog 2; MAD homolog 2; Mothers against DPP homolog 2; JV18-1; Mad-related protein 2; hMAD-2; SMAD family member 2; SMAD 2; Smad2; hSMAD2
Gene ID	4087
SwissProt ID	Q15796.

Application

Dilution Ratio	WB: 1:500-1:1000 IHC: 1:50-1:100 IF: 1:50-1:200 IP: 1:20
Molecular Weight	Calculated MW: 52 kDa; Observed MW: 52 kDa

Product Name: Smad2 Rabbit Monoclonal antibody
Catalog #: AMRe03795



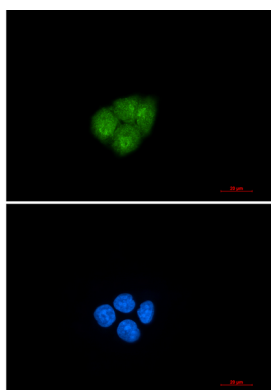
Background

The protein encoded by this gene belongs to the SMAD, a family of proteins similar to the gene products of the *Drosophila* gene 'mothers against decapentaplegic' (Mad) and the *C. elegans* gene Sma. SMAD proteins are signal transducers and transcriptional modulators that mediate multiple signaling pathways.

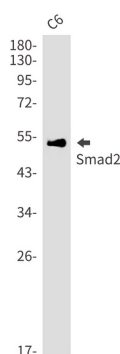
Research Area

Signal Transduction

Image Data

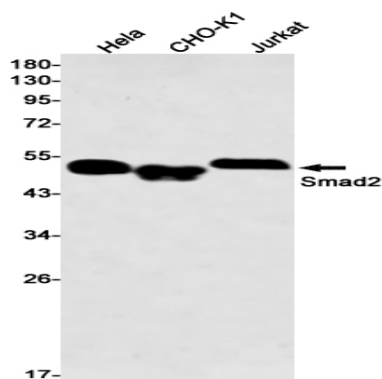


Immunocytochemistry analysis of Smad2 (green) in HeLa using Smad2 antibody, and DAPI (blue).

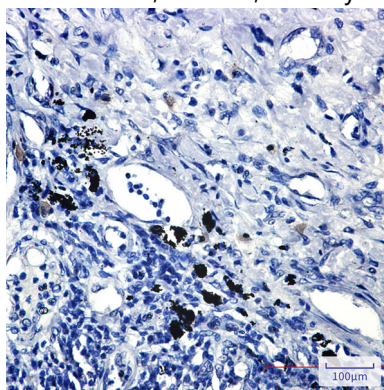


Western blot analysis of Smad2 in C6 lysates using Smad2 antibody.

Product Name: Smad2 Rabbit Monoclonal antibody
Catalog #: AMRe03795



Western blot analysis of Smad2 in HeLa, CHO-K1, Jurkat lysates using Smad2 antibody



Immunohistochemistry analysis of paraffin-embedded Human lung cancer using Smad2 antibody. High-pressure and temperature Sodium Citrate pH 6.0 was used for antigen retrieval.

Note

For research use only.