

Product Name: Paxillin Rabbit Monoclonal Antibody
Catalog #: AMRe03789



Summary

Production Name	Paxillin Rabbit Monoclonal Antibody
Description	Rabbit Monoclonal antibody
Host	Rabbit
Application	WB,IHC-F,IHC-P,ICC/IF,IP
Reactivity	Human,Mouse,Rat

Performance

Conjugation	Unconjugated
Modification	Unmodified
Isotype	IgG
Clonality	Monoclonal
Form	Liquid
Storage	Store at 4°C short term. Aliquot and store at -20°C long term. Avoid freeze/thaw cycles.
Buffer	50mM Tris-Glycine(pH 7.4), 0.15M NaCl, 40% Glycerol, 0.01% Sodium azide and 0.05% BSA
Purification	Affinity Purification

Immunogen

Gene Name	PXN
Alternative Names	PXN; Paxillin
Gene ID	5829
SwissProt ID	P49023.

Application

Dilution Ratio	WB: 1:500-1:1000 IHC: 1:50-1:100 IF: 1:50-1:200 IP: 1:20
Molecular Weight	Calculated MW: 65 kDa; Observed MW: 65 kDa

Background

Product Name: Paxillin Rabbit Monoclonal Antibody
Catalog #: AMRe03789

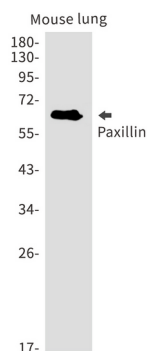


Cytoskeletal protein involved in actin-membrane attachment at sites of cell adhesion to the extracellular matrix (focal adhesion). PXN is a multi-domain cytoskeletal protein that localizes primarily to focal adhesion sites to the extracellular matrix. Phosphorylated by focal adhesion kinase (FAK) and is a component of integrin signaling. Its phosphorylation provides docking sites for recruitment of signaling molecules to focal adhesions.

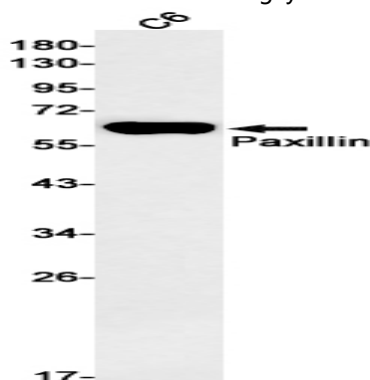
Research Area

Signal Transduction

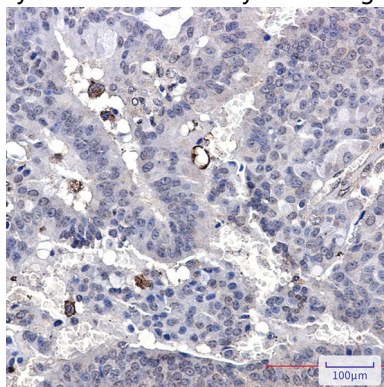
Image Data



Western blot analysis of Paxillin in mouse lung lysates using Paxillin antibody.



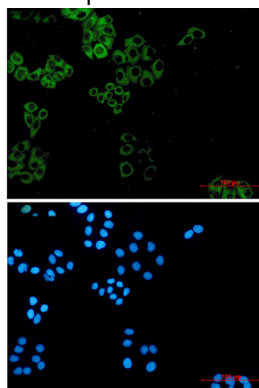
Western blot analysis of Paxillin in C6 lysates using Paxillin antibody.



Product Name: Paxillin Rabbit Monoclonal Antibody
Catalog #: AMRe03789



Immunohistochemistry analysis of paraffin-embedded Human breast cancer using Paxillin antibody. High-pressure and temperature Sodium Citrate pH 6.0 was used for antigen retrieval.



Immunocytochemistry analysis of Paxillin (green) in hela using Paxillin antibody, and DAPI (blue).

Note

For research use only.