

**Product Name: Integrin beta 1 Rabbit Monoclonal antibody**  
**Catalog #: AMRe03779**

---

## Summary

<b>Production Name</b>	Integrin beta 1 Rabbit Monoclonal antibody
<b>Description</b>	Recombinant Rabbit Monoclonal antibody
<b>Host</b>	Rabbit
<b>Application</b>	WB
<b>Reactivity</b>	Human,Mouse,Rat

## Performance

<b>Conjugation</b>	Unconjugated
<b>Modification</b>	Unmodified
<b>Isotype</b>	IgG
<b>Clonality</b>	Monoclonal Antibody
<b>Form</b>	Liquid
<b>Storage</b>	Store at 4°C short term. Aliquot and store at -20°C long term. Avoid freeze/thaw cycles.
<b>Buffer</b>	50mM Tris-Glycine(pH 7.4), 0.15M NaCl, 40% Glycerol, 0.01% Sodium azide and 0.05% BSA
<b>Purification</b>	Affinity Purified

## Immunogen

<b>Gene Name</b>	ITGB1
<b>Alternative Names</b>	ITGB1; FN1RB; MDF2; MSK12; Integrin beta-1; Fibronectin receptor subunit beta; VLA-4 subunit beta; CD antigen CD29
<b>Gene ID</b>	3688
<b>SwissProt ID</b>	P05556.

## Application

<b>Dilution Ratio</b>	WB: 1:500-1:1000
<b>Molecular Weight</b>	Calculated MW: 88 kDa; Observed MW: 120-160 kDa

**Product Name: Integrin beta 1 Rabbit Monoclonal antibody**  
**Catalog #: AMRe03779**

---



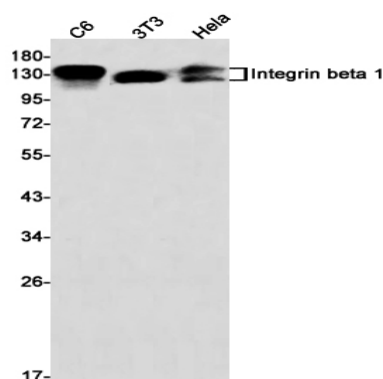
## Background

Integrins are  $\alpha/\beta$  heterodimeric cell surface receptors that play a pivotal role in cell adhesion and migration, as well as in growth and survival. The integrin family contains at least 18  $\alpha$  and 8  $\beta$  subunits that form 24 known integrins with distinct tissue distribution and overlapping ligand specificities.

## Research Area

Neuroscience

## Image Data



Western blot analysis of Integrin beta 1 in C6, 3T3, HeLa lysates using Integrin beta 1 antibody.

## Note

For research use only.