

Summary

Production Name	Iba1 Rabbit Monoclonal Antibody
Description	Rabbit Monoclonal antibody
Host	Rabbit
Application	WB,IHC-P
Reactivity	Human,Mouse,Rat

Performance

Conjugation	Unconjugated
Modification	Unmodified
Isotype	IgG
Clonality	Monoclonal
Form	Liquid
Storage	Store at 4°C short term. Aliquot and store at -20°C long term. Avoid freeze/thaw cycles.
Buffer	50mM Tris-Glycine(pH 7.4), 0.15M NaCl, 40% Glycerol, 0.01% Sodium azide and 0.05% BSA
Purification	Affinity Purification

Immunogen

Gene Name	Aif1
Alternative Names	G1; Iba1; AIF-1; AI607846; D17H6S50E
Gene ID	11629.0
SwissProt ID	O70200.

Application

Dilution Ratio	WB: 1:500-1:1000 IHC: 1:50-1:100
Molecular Weight	Calculated MW: 17 kDa; Observed MW: 17 kDa

Background

Product Name: Iba1 Rabbit Monoclonal Antibody
Catalog #: AMRe03778

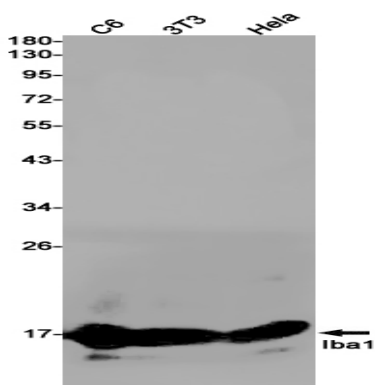


Actin-binding protein that enhances membrane ruffling and RAC activation. Enhances the actin-bundling activity of LCP1. Binds calcium. Plays a role in RAC signaling and in phagocytosis. May play a role in macrophage activation and function. Promotes the proliferation of vascular smooth muscle cells and of T-lymphocytes. Enhances lymphocyte migration. Plays a role in vascular inflammation.

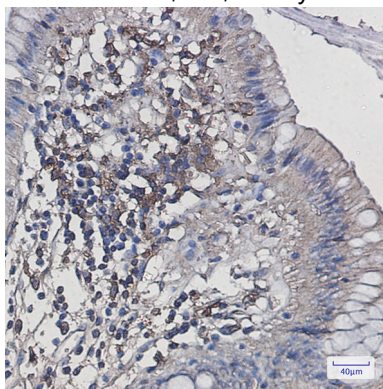
Research Area

Cell Biology

Image Data



Western blot analysis of Iba1 in C6, 3T3, HeLa lysates using Iba1 antibody.



Immunohistochemistry analysis of paraffin-embedded Human colon cancer using Iba1 antibody. High-pressure and temperature Sodium Citrate pH 6.0 was used for antigen retrieval.

Note

For research use only.