

**Product Name: Rabbit IgG (5B2) Mouse Monoclonal Antibody**  
**Catalog #: AMRe03532**

---

## Summary

<b>Production Name</b>	Rabbit IgG (5B2) Mouse Monoclonal Antibody
<b>Description</b>	Rabbit Monoclonal antibody
<b>Host</b>	Mouse
<b>Application</b>	WB,ELISA
<b>Reactivity</b>	Rabbit

## Performance

<b>Conjugation</b>	Unconjugated
<b>Modification</b>	Unmodified
<b>Isotype</b>	IgG1
<b>Clonality</b>	Monoclonal
<b>Form</b>	Liquid
<b>Storage</b>	Store at 4°C short term. Aliquot and store at -20°C long term. Avoid freeze/thaw cycles.
<b>Buffer</b>	Liquid in PBS containing 50% glycerol, 0.5% BSA and 0.02% sodium azide, pH 7.3.
<b>Purification</b>	Affinity Purification

## Immunogen

<b>Gene Name</b>	Rabbit IgG
<b>Alternative Names</b>	Antibody; Ig gamma chain C region; Ig kappa-b4 chain C region; Ig kappa-b5 chain C region; Ig kappa-b9 chain C region; Ig lambda chain C region; K-BAS.
<b>Gene ID</b>	-
<b>SwissProt ID</b>	-.

## Application

<b>Dilution Ratio</b>	WB: 1:500-1:1000 ELISA: 1:10000
<b>Molecular Weight</b>	Calculated MW: 55,25 kDa; Observed MW: 55,25 kDa

**Product Name: Rabbit IgG (5B2) Mouse Monoclonal Antibody**  
**Catalog #: AMRe03532**



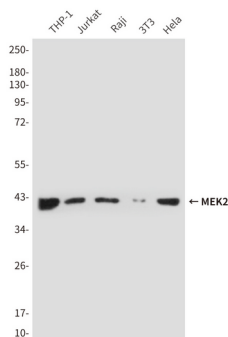
## Background

Constant region of immunoglobulin heavy chains. Immunoglobulins, also known as antibodies, are membrane-bound or secreted glycoproteins produced by B lymphocytes.

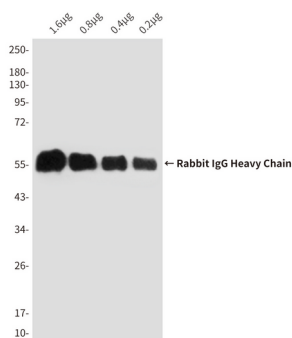
## Research Area

Immunology

## Image Data



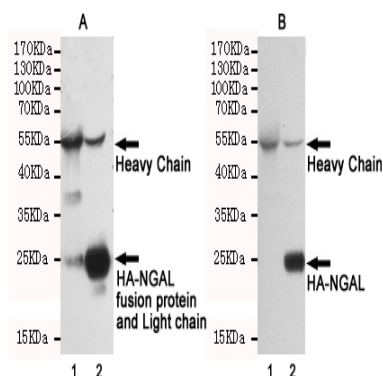
Western blot analysis of MEK2 in THP-1, Jurkat, Raji, 3T3 and Hela lysates using MEK2 antibody, then incubated with 201069(Rabbit IgG mAb).Anti-mouse IgG, HRPlinked antibody was used for detecting.



Western blot analysis of Rabbit IgG (5B2) in decreasing concentrations of total rabbit IgG reduced and denatured in 2X SDS loading buffer with DTT using IgG (HeavyChain Specific)antibody.

**Product Name: Rabbit IgG (5B2) Mouse Monoclonal Antibody**  
**Catalog #: AMRe03532**

---



Immunoprecipitation analysis of Rabbit IgG (5B2) in CHO-K1 lysates transfected with HA-tagged NGAL using HATag antibody (lane 2). Lane 1 contains rabbit IgG IP control lysates. All lanes are probed with HATag antibody as the primary antibody. Panel A incubated with secondary antibodies anti-rabbit whole IgG, HRPLinked antibody for detecting. Panel B incubated with anti-rabbit IgG (HeavyChain Specific) mAb and the Anti-mouse whole IgG, HRPLinked antibody was used for detecting.

## Note

For research use only.