

**Product Name: MCL1 Rabbit Monoclonal antibody**  
**Catalog #: AMRe03283**



## Summary

<b>Production Name</b>	MCL1 Rabbit Monoclonal antibody
<b>Description</b>	Recombinant Rabbit Monoclonal antibody
<b>Host</b>	Rabbit
<b>Application</b>	WB, ICC/IF, IP
<b>Reactivity</b>	Human, Rat

## Performance

<b>Conjugation</b>	Unconjugated
<b>Modification</b>	Unmodified
<b>Isotype</b>	IgG
<b>Clonality</b>	Monoclonal Antibody
<b>Form</b>	Liquid
<b>Storage</b>	Store at 4°C short term. Aliquot and store at -20°C long term. Avoid freeze/thaw cycles.
<b>Buffer</b>	50mM Tris-Glycine(pH 7.4), 0.15M NaCl, 40% Glycerol, 0.01% Sodium azide and 0.05% BSA
<b>Purification</b>	Affinity Purified

## Immunogen

<b>Gene Name</b>	MCL1
<b>Alternative Names</b>	MCL1; BCL2L3; Induced myeloid leukemia cell differentiation protein Mcl-1; Bcl-2-like protein 3; Bcl2-L-3; Bcl-2-related protein EAT/mcl1; mcl1/EAT
<b>Gene ID</b>	4170
<b>SwissProt ID</b>	Q07820.

## Application

<b>Dilution Ratio</b>	WB: 1:500-1:1000 IF: 1:50-1:200 IP: 1:20
<b>Molecular Weight</b>	Calculated MW: 37 kDa; Observed MW: 40 kDa

**Product Name: MCL1 Rabbit Monoclonal antibody**  
**Catalog #: AMRe03283**



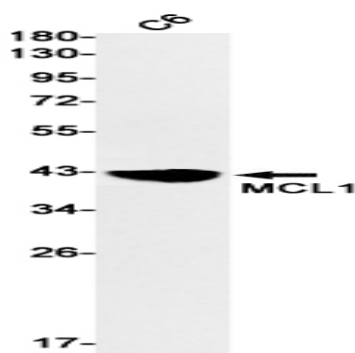
## Background

MCL1 a myeloid cell leukemia protein of the Bcl-2 family of proteins. Two alternatively spliced transcripts encoding distinct isoforms have been identified. The longer gene product (isoform 1) enhances cell survival by inhibiting apoptosis while the alternatively spliced shorter gene product (isoform 2) promotes apoptosis and is death-inducing.

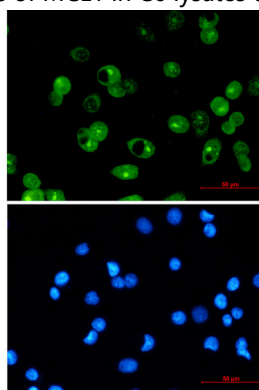
## Research Area

Cell Biology

## Image Data



Western blot analysis of MCL1 in C6 lysates using MCL1 antibody.



Immunocytochemistry analysis of MCL1 (green) in MCF-7 using MCL1 antibody, and DAPI (blue)

## Note

For research use only.