

Product Name: KDM4A Rabbit Monoclonal Antibody
Catalog #: AMRe03276



Summary

Production Name	KDM4A Rabbit Monoclonal Antibody
Description	Rabbit Monoclonal antibody
Host	Rabbit
Application	WB,IP
Reactivity	Human

Performance

Conjugation	Unconjugated
Modification	Unmodified
Isotype	IgG
Clonality	Monoclonal
Form	Liquid
Storage	Store at 4°C short term. Aliquot and store at -20°C long term. Avoid freeze/thaw cycles.
Buffer	50mM Tris-Glycine(pH 7.4), 0.15M NaCl, 40% Glycerol, 0.01% Sodium azide and 0.05% BSA
Purification	Affinity Purification

Immunogen

Gene Name	KDM4A KDM4A; JHDM3A; JMJD2; JMJD2A; KIAA0677; Lysine-specific demethylase 4A; JmjC
Alternative Names	domain-containing histone demethylation protein 3A; Jumonji domain-containing protein 2A
Gene ID	9682
SwissProt ID	O75164.

Application

Dilution Ratio	WB: 1:500-1:1000 IP: 1:20
Molecular Weight	Calculated MW: 121 kDa; Observed MW: 150 kDa

Product Name: KDM4A Rabbit Monoclonal Antibody
Catalog #: AMRe03276



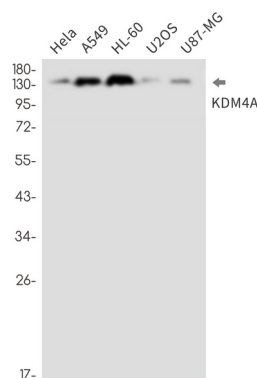
Background

Histone demethylase that specifically demethylates 'Lys-9' and 'Lys-36' residues of histone H3, thereby playing a central role in histone code. Does not demethylate histone H3 'Lys-4', H3 'Lys-27' nor H4 'Lys-20'. Demethylates trimethylated H3 'Lys-9' and H3 'Lys-36' residue, while it has no activity on mono- and dimethylated residues.

Research Area

Epigenetics and Nuclear Signaling

Image Data



Western blot analysis of KDM4A in Hela, A549, HL-60, U2OS, U87-MG lysates using KDM4A antibody.

Note

For research use only.