

Product Name: SUMO Conjugating Enzyme UBC9 Rabbit Monoclonal Antibody
Catalog #: AMRe03246

Summary

Production Name	SUMO Conjugating Enzyme UBC9 Rabbit Monoclonal Antibody
Description	Rabbit Monoclonal antibody
Host	Rabbit
Application	WB,IHC-F,IHC-P,ICC/IF,IP
Reactivity	Human,Mouse,Rat

Performance

Conjugation	Unconjugated
Modification	Unmodified
Isotype	IgG
Clonality	Monoclonal
Form	Liquid
Storage	Store at 4°C short term. Aliquot and store at -20°C long term. Avoid freeze/thaw cycles.
Buffer	50mM Tris-Glycine(pH 7.4), 0.15M NaCl, 40% Glycerol, 0.01% Sodium azide and 0.05% BSA
Purification	Affinity Purification

Immunogen

Gene Name	UBE2I
Alternative Names	UBE2I; UBC9; UBCE9; SUMO-conjugating enzyme UBC9; SUMO-protein ligase; Ubiquitin carrier protein 9; Ubiquitin carrier protein I; Ubiquitin-conjugating enzyme E2 I; Ubiquitin-protein ligase I; p18
Gene ID	7329
SwissProt ID	P63279.

Application

Dilution Ratio	WB: 1:500-1:1000 IHC: 1:50-1:100 IF: 1:50-1:200 IP: 1:20
Molecular Weight	Calculated MW: 18 kDa; Observed MW: 18 kDa

Product Name: SUMO Conjugating Enzyme UBC9 Rabbit Monoclonal Antibody
Catalog #: AMRe03246

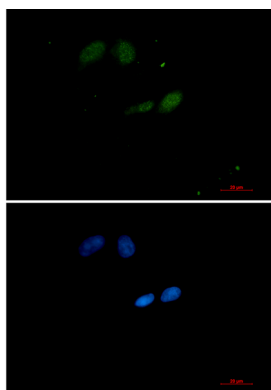
Background

The process of SUMO-1 conjugation is similar to that seen with ubiquitin and other forms of post-translational protein modification. Like ubiquitin, SUMO-1 is conjugated to its target protein by the coordinated action of ubiquitin conjugation enzymes E1, E2 and E3. Ubc9 (or ube2M) is a highly conserved, 158 amino acid protein that acts as a SUMO-1 conjugating enzyme. Ubc9 binds to target proteins through their SUMO-1-CS (consensus sequence) domains and interacts with SUMO via the structurally conserved amino-terminal domain.

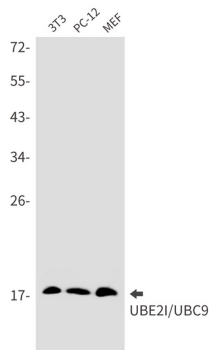
Research Area

Cell Biology

Image Data

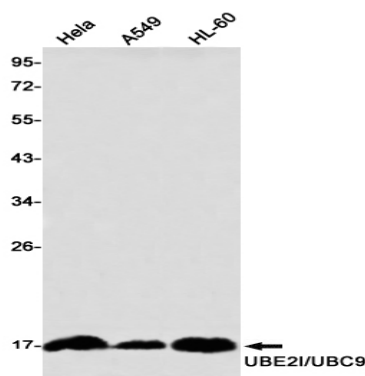


Immunocytochemistry analysis of SUMO Conjugating Enzyme UBC9 (green) in HeLa using SUMO Conjugating Enzyme UBC9 antibody, and DAPI (blue).

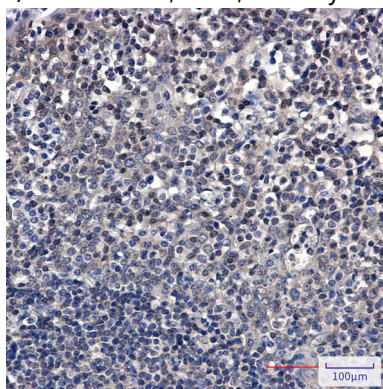


Western blot analysis of UBE2I/UBC9 in 3T3, PC-12, MEF lysates using UBE2I/UBC9 antibody.

**Product Name: SUMO Conjugating Enzyme UBC9 Rabbit
Monoclonal Antibody**
Catalog #: AMRe03246



Western blot analysis of UBE2I/UBC9 in HeLa, A549, HL-60 lysates using UBE2I/UBC9 antibody



Immunohistochemistry analysis of paraffin-embedded Human tonsil using UBE2I/UBC9 antibody. High-pressure and temperature Sodium Citrate pH 6.0 was used for antigen retrieval.

Note

For research use only.