

## Summary

<b>Production Name</b>	TPX2 Rabbit Monoclonal Antibody
<b>Description</b>	Rabbit Monoclonal antibody
<b>Host</b>	Rabbit
<b>Application</b>	WB, ICC/IF
<b>Reactivity</b>	Human

## Performance

<b>Conjugation</b>	Unconjugated
<b>Modification</b>	Unmodified
<b>Isotype</b>	IgG
<b>Clonality</b>	Monoclonal
<b>Form</b>	Liquid
<b>Storage</b>	Store at 4°C short term. Aliquot and store at -20°C long term. Avoid freeze/thaw cycles.
<b>Buffer</b>	50mM Tris-Glycine(pH 7.4), 0.15M NaCl, 40% Glycerol, 0.01% Sodium azide and 0.05% BSA
<b>Purification</b>	Affinity Purification

## Immunogen

<b>Gene Name</b>	TPX2
<b>Alternative Names</b>	DIL2; p100; DIL-2; HCTP4; FLS353; HCA519; REPP86; C20orf1; C20orf2; GD:C20orf1
<b>Gene ID</b>	22974
<b>SwissProt ID</b>	Q9ULW0.

## Application

<b>Dilution Ratio</b>	WB: 1:500-1:1000 IF: 1:50-1:200
<b>Molecular Weight</b>	Calculated MW: 86 kDa; Observed MW: 100 kDa

## Background

**Product Name: TPX2 Rabbit Monoclonal Antibody**  
**Catalog #: AMRe03237**

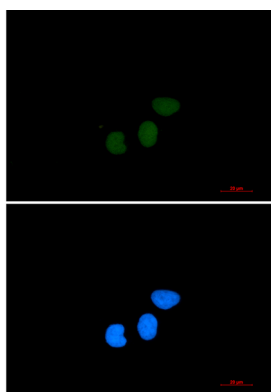


Spindle assembly factor. Required for normal assembly of mitotic spindles. Required for normal assembly of microtubules during apoptosis. Required for chromatin and/or kinetochore dependent microtubule nucleation. Mediates AURKA localization to spindle microtubules. Activates AURKA by promoting its autophosphorylation at 'Thr-288' and protects this residue against dephosphorylation.

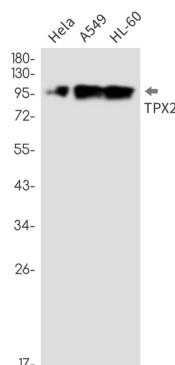
## Research Area

Cell Biology

## Image Data



Immunocytochemistry analysis of TPX2 (green) in HeLa using TPX2 antibody, and DAPI (blue).



Western blot analysis of TPX2 in HeLa, A549, HL-60 lysates using TPX2 antibody.

## Note

For research use only.