

**Product Name: TCP 1 alpha Rabbit Monoclonal antibody**  
**Catalog #: AMRe03224**



## Summary

<b>Production Name</b>	TCP 1 alpha Rabbit Monoclonal antibody
<b>Description</b>	Recombinant Rabbit Monoclonal antibody
<b>Host</b>	Rabbit
<b>Application</b>	WB,IHC-F,IHC-P,ICC/IF,IP
<b>Reactivity</b>	Human,Hamster

## Performance

<b>Conjugation</b>	Unconjugated
<b>Modification</b>	Unmodified
<b>Isotype</b>	IgG
<b>Clonality</b>	Monoclonal Antibody
<b>Form</b>	Liquid
<b>Storage</b>	Store at 4°C short term. Aliquot and store at -20°C long term. Avoid freeze/thaw cycles.
<b>Buffer</b>	50mM Tris-Glycine(pH 7.4), 0.15M NaCl, 40% Glycerol, 0.01% Sodium azide and 0.05% BSA
<b>Purification</b>	Affinity Purified

## Immunogen

<b>Gene Name</b>	TCP1
<b>Alternative Names</b>	TCP1; CCT1; CCTA; T-complex protein 1 subunit alpha; TCP-1-alpha; CCT-alpha
<b>Gene ID</b>	6950
<b>SwissProt ID</b>	P17987.

## Application

<b>Dilution Ratio</b>	WB: 1:500-1:1000 IHC: 1:50-1:100 IF: 1:50-1:200 IP: 1:20
<b>Molecular Weight</b>	Calculated MW: 60 kDa; Observed MW: 60 kDa

## Background

**Product Name: TCP 1 alpha Rabbit Monoclonal antibody**  
**Catalog #: AMRe03224**

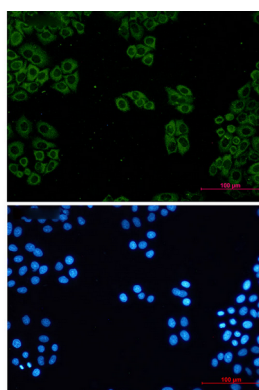


Molecular chaperone; assists the folding of proteins upon ATP hydrolysis. As part of the BBS/CCT complex may play a role in the assembly of BBSome, a complex involved in ciliogenesis regulating transports vesicles to the cilia. Known to play a role, in vitro, in the folding of actin and tubulin.

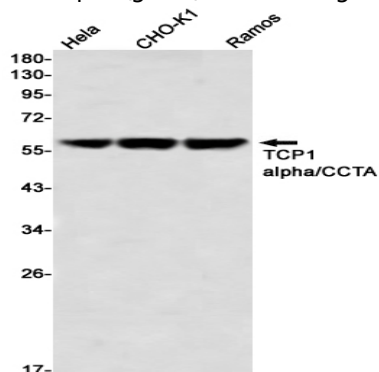
## Research Area

Signal Transduction

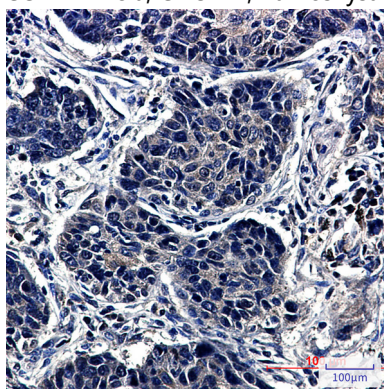
## Image Data



Immunocytochemistry analysis of TCP 1 alpha (green) in Hela using TCP 1 alpha antibody, and DAPI (blue).



Western blot analysis of TCP1 alpha/CCTA in Hela, CHO-K1, Ramos lysates using TCP1 alpha/CCTA antibody.



Immunohistochemistry analysis of paraffin-embedded Human lung cancer tissue using TCP1 alpha/CCTA antibody. High-

**Product Name: TCP 1 alpha Rabbit Monoclonal antibody**  
**Catalog #: AMRe03224**



---

pressure and temperature Sodium Citrate pH 6.0 was used for antigen retrieval.

**Note**

For research use only.