

Product Name: Synapsin 2 Rabbit Monoclonal Antibody
Catalog #: AMRe03220



Summary

Production Name	Synapsin 2 Rabbit Monoclonal Antibody
Description	Rabbit Monoclonal antibody
Host	Rabbit
Application	WB,IHC-P
Reactivity	Human,Mouse,Rat

Performance

Conjugation	Unconjugated
Modification	Unmodified
Isotype	IgG
Clonality	Monoclonal
Form	Liquid
Storage	Store at 4°C short term. Aliquot and store at -20°C long term. Avoid freeze/thaw cycles.
Buffer	50mM Tris-Glycine(pH 7.4), 0.15M NaCl, 40% Glycerol, 0.01% Sodium azide and 0.05% BSA
Purification	Affinity Purification

Immunogen

Gene Name	SYN2
Alternative Names	SYN 2; SYN II; SYN IIa; SYN IIb; SYN2; Synapsin2; SynapsinII; SYNII; SYNIIa; SYNIIb
Gene ID	6854
SwissProt ID	Q92777.

Application

Dilution Ratio	WB: 1:500-1:1000 IHC: 1:50-1:100
Molecular Weight	Calculated MW: 63 kDa; Observed MW: 63 kDa

Background

Product Name: Synapsin 2 Rabbit Monoclonal Antibody
Catalog #: AMRe03220

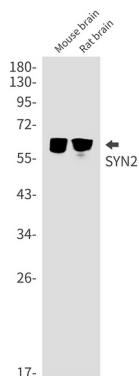


Synapsin II is a member of the synapsin gene family. Synapsins are neuronal phosphoproteins which associate with the cytoplasmic surface of synaptic vesicles.

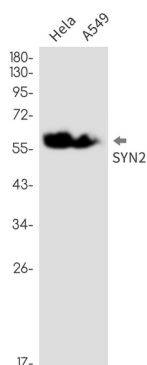
Research Area

Signal Transduction

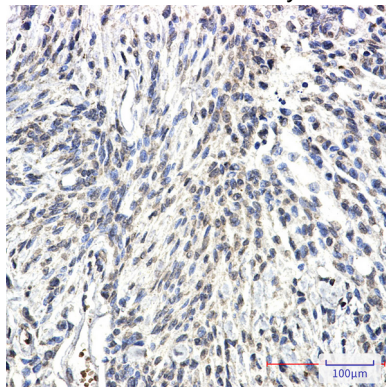
Image Data



Western blot analysis of SYN2 in mouse brain, rat brain lysates using Synapsin 2 antibody.



Western blot analysis of SYN2 in HeLa, A549 lysates using SYN2 antibody.



Immunohistochemistry analysis of paraffin-embedded Human Brain using SYN2 antibody. High-pressure and temperature Sodium Citrate pH 6.0 was used for antigen retrieval.



Product Name: Synapsin 2 Rabbit Monoclonal Antibody
Catalog #: AMRe03220

Note

For research use only.