

**Product Name: SF3B1 Rabbit Monoclonal antibody**  
**Catalog #: AMRe03201**



## Summary

<b>Production Name</b>	SF3B1 Rabbit Monoclonal antibody
<b>Description</b>	Recombinant Rabbit Monoclonal antibody
<b>Host</b>	Rabbit
<b>Application</b>	WB,IHC-F,IHC-P,ICC/IF
<b>Reactivity</b>	Human,Mouse,Hamster,Rat

## Performance

<b>Conjugation</b>	Unconjugated
<b>Modification</b>	Unmodified
<b>Isotype</b>	IgG
<b>Clonality</b>	Monoclonal Antibody
<b>Form</b>	Liquid
<b>Storage</b>	Store at 4°C short term. Aliquot and store at -20°C long term. Avoid freeze/thaw cycles.
<b>Buffer</b>	50mM Tris-Glycine(pH 7.4), 0.15M NaCl, 40% Glycerol, 0.01% Sodium azide and 0.05% BSA
<b>Purification</b>	Affinity Purified

## Immunogen

<b>Gene Name</b>	SF3B1
<b>Alternative Names</b>	SF3B1; SAP155; Splicing factor 3B subunit 1; Pre-mRNA-splicing factor SF3b 155 kDa subunit; SF3b155; Spliceosome-associated protein 155; SAP 155
<b>Gene ID</b>	23451
<b>SwissProt ID</b>	O75533.

## Application

<b>Dilution Ratio</b>	WB: 1:500-1:1000 IHC: 1:50-1:100 IF: 1:50-1:200
<b>Molecular Weight</b>	Calculated MW: 146 kDa; Observed MW: 155 kDa

**Product Name: SF3B1 Rabbit Monoclonal antibody**  
**Catalog #: AMRe03201**



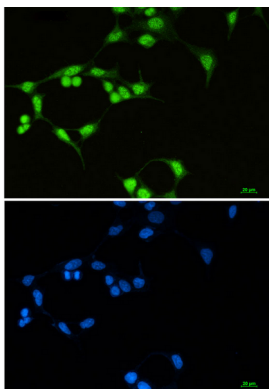
## Background

SF3B1 is subunit 1 of the splicing factor 3b protein complex. Splicing factor 3b, together with splicing factor 3a and a 12S RNA unit, forms the U2 small nuclear ribonucleoproteins complex (U2 snRNP). The splicing factor 3b/3a complex binds pre-mRNA upstream of the intron's branch site in a sequence independent manner and may anchor the U2 snRNP to the pre-mRNA.

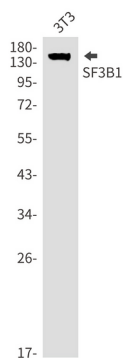
## Research Area

Epigenetics and Nuclear Signaling

## Image Data

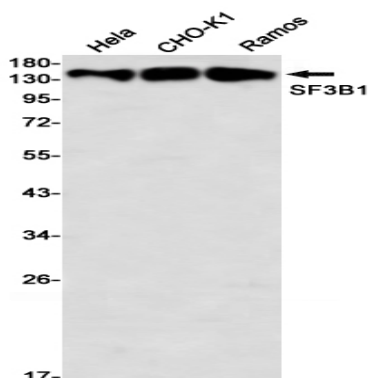


Immunocytochemistry analysis of SF3B1 (green) in 293T using SF3B1 antibody, and DAPI (blue).

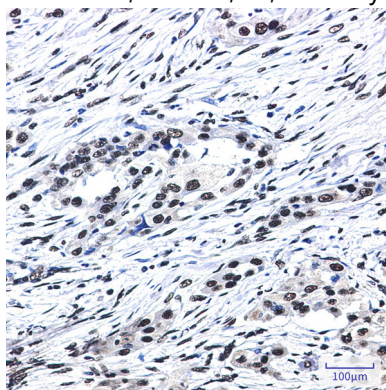


Western blot analysis of SF3B1 in 3T3 lysates using SF3B1 antibody.

**Product Name: SF3B1 Rabbit Monoclonal antibody**  
**Catalog #: AMRe03201**



Western blot analysis of SF3B1 in HeLa, CHO-K1, C6, Ramos lysates using SF3B1 antibody



Immunohistochemistry analysis of paraffin-embedded Human lung cancer using SF3B1 antibody. High-pressure and temperature Sodium Citrate pH 6.0 was used for antigen retrieval.

## Note

For research use only.