

**Product Name: RPS8 Rabbit Monoclonal antibody**  
**Catalog #: AMRe03191**



## Summary

<b>Production Name</b>	RPS8 Rabbit Monoclonal antibody
<b>Description</b>	Recombinant Rabbit Monoclonal antibody
<b>Host</b>	Rabbit
<b>Application</b>	WB, ICC/IF, IP
<b>Reactivity</b>	Human, Mouse, Rat, Hamster

## Performance

<b>Conjugation</b>	Unconjugated
<b>Modification</b>	Unmodified
<b>Isotype</b>	IgG
<b>Clonality</b>	Monoclonal Antibody
<b>Form</b>	Liquid
<b>Storage</b>	Store at 4°C short term. Aliquot and store at -20°C long term. Avoid freeze/thaw cycles.
<b>Buffer</b>	50mM Tris-Glycine(pH 7.4), 0.15M NaCl, 40% Glycerol, 0.01% Sodium azide and 0.05% BSA
<b>Purification</b>	Affinity Purified

## Immunogen

<b>Gene Name</b>	RPS8
<b>Alternative Names</b>	S8
<b>Gene ID</b>	6202
<b>SwissProt ID</b>	P62241.

## Application

<b>Dilution Ratio</b>	WB: 1:500-1:1000 IF: 1:50-1:200 IP: 1:20
<b>Molecular Weight</b>	Calculated MW: 24 kDa; Observed MW: 24 kDa

## Background

**Product Name: RPS8 Rabbit Monoclonal antibody**  
**Catalog #: AMRe03191**

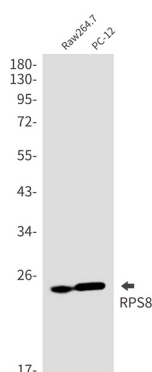


Ribosomes, the organelles that catalyze protein synthesis, consist of a small 40S subunit and a large 60S subunit. Together these subunits are composed of 4 RNA species and approximately 80 structurally distinct proteins. This gene encodes a ribosomal protein that is a component of the 40S subunit. The protein belongs to the S8E family of ribosomal proteins.

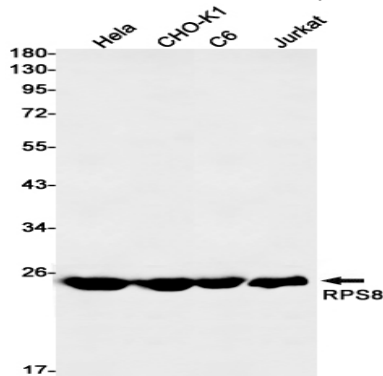
## Research Area

-

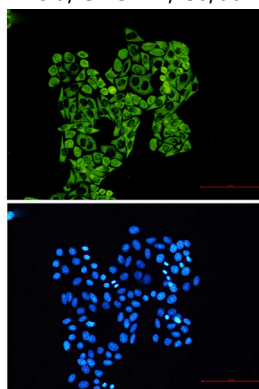
## Image Data



Western blot analysis of RPS8 in Raw264.7, PC-12 lysates using RPS8 antibody.



Western blot analysis of RPS8 in HeLa, CHO-K1, C6, Jurkat lysates using RPS8 antibody.



Immunocytochemistry analysis of RPS8 (green) in HeLa using RPS8 antibody, and DAPI (blue)

**Product Name: RPS8 Rabbit Monoclonal antibody**  
**Catalog #: AMRe03191**

---



**Note**

For research use only.