

## Summary

<b>Production Name</b>	SPI1 Rabbit Monoclonal Antibody
<b>Description</b>	Rabbit Monoclonal antibody
<b>Host</b>	Rabbit
<b>Application</b>	WB,IHC-F,IHC-P,ICC/IF,IP
<b>Reactivity</b>	Human,Mouse,Hamster,Rat

## Performance

<b>Conjugation</b>	Unconjugated
<b>Modification</b>	Unmodified
<b>Isotype</b>	IgG
<b>Clonality</b>	Monoclonal
<b>Form</b>	Liquid
<b>Storage</b>	Store at 4°C short term. Aliquot and store at -20°C long term. Avoid freeze/thaw cycles.
<b>Buffer</b>	50mM Tris-Glycine(pH 7.4), 0.15M NaCl, 40% Glycerol, 0.01% Sodium azide and 0.05% BSA
<b>Purification</b>	Affinity Purification

## Immunogen

<b>Gene Name</b>	Spi1
<b>Alternative Names</b>	Dis1; PU.1; Dis-1; Sfpi1; Spi-1; Sfpi-1; Tcfpu1; Tfpu.1
<b>Gene ID</b>	20375.0
<b>SwissProt ID</b>	P17433.

## Application

<b>Dilution Ratio</b>	WB: 1:500-1:1000 IHC: 1:50-1:100 IF: 1:50-1:200 IP: 1:20
<b>Molecular Weight</b>	Calculated MW: 31 kDa; Observed MW: 31 kDa

## Background

**Product Name: SPI1 Rabbit Monoclonal Antibody**  
**Catalog #: AMRe03170**

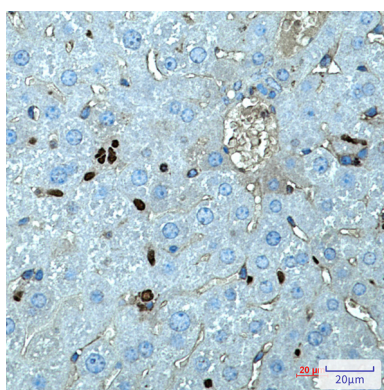


Binds to the PU-box, a purine-rich DNA sequence (5'-GAGGAA-3') that can act as a lymphoid-specific enhancer. This protein is a transcriptional activator that may be specifically involved in the differentiation or activation of macrophages or B-cells. Also binds RNA and may modulate pre-mRNA splicing.

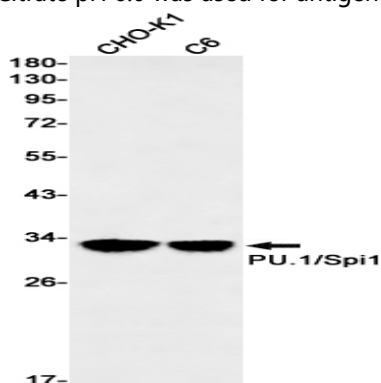
## Research Area

Immunology

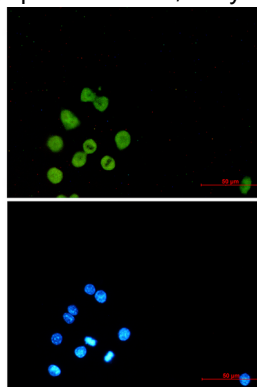
## Image Data



Immunohistochemistry analysis of paraffin-embedded mouse liver using SPI1 antibody. High-pressure and temperature Sodium Citrate pH 6.0 was used for antigen retrieval.



Western blot analysis of PU.1/Spi1 in CHO-K1, C6 lysates using PU.1/Spi1 antibody.



**Product Name: SPI1 Rabbit Monoclonal Antibody**  
**Catalog #: AMRe03170**



---

Immunocytochemistry analysis of PU.1/Spi1 (green) in Raw264.7 using PU.1/Spi1 antibody, and DAPI (blue)

**Note**

For research use only.