

Product Name: PRAS40 Rabbit Monoclonal Antibody
Catalog #: AMRe03162



Summary

Production Name	PRAS40 Rabbit Monoclonal Antibody
Description	Rabbit Monoclonal antibody
Host	Rabbit
Application	WB,IP
Reactivity	Human,Rat

Performance

Conjugation	Unconjugated
Modification	Unmodified
Isotype	IgG
Clonality	Monoclonal
Form	Liquid
Storage	Store at 4°C short term. Aliquot and store at -20°C long term. Avoid freeze/thaw cycles.
Buffer	50mM Tris-Glycine(pH 7.4), 0.15M NaCl, 40% Glycerol, 0.01% Sodium azide and 0.05% BSA
Purification	Affinity Purification

Immunogen

Gene Name	AKT1S1
Alternative Names	AKT1S1; PRAS40; Proline-rich AKT1 substrate 1; 40 kDa proline-rich AKT substrate
Gene ID	84335
SwissProt ID	Q96B36.

Application

Dilution Ratio	WB: 1:500-1:1000 IP: 1:20
Molecular Weight	Calculated MW: 27 kDa; Observed MW: 40 kDa

Background

PRAS40 interacts with Raptor in mTOR complex 1 (mTORC1) in insulin-deprived cells and inhibits the activation of the

Product Name: PRAS40 Rabbit Monoclonal Antibody
Catalog #: AMRe03162

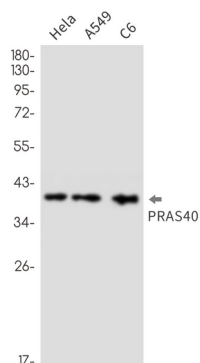


mTORC1 pathway mediated by the cell cycle protein Rheb. Phosphorylation of PRAS40 by Akt at Thr246 relieves PRAS40 inhibition of mTORC1. mTORC1 in turn phosphorylates PRAS40 at Ser183.

Research Area

Cell Biology

Image Data



Western blot analysis of PRAS40 in HeLa, A549, C6 lysates using PRAS40 antibody.

Note

For research use only.