

Summary

Production Name	PEN2 Rabbit Monoclonal Antibody
Description	Rabbit Monoclonal antibody
Host	Rabbit
Application	WB,IHC-F,IHC-P,ICC/IF
Reactivity	Human,Mouse,Rat

Performance

Conjugation	Unconjugated
Modification	Unmodified
Isotype	IgG
Clonality	Monoclonal
Form	Liquid
Storage	Store at 4°C short term. Aliquot and store at -20°C long term. Avoid freeze/thaw cycles.
Buffer	50mM Tris-Glycine(pH 7.4), 0.15M NaCl, 40% Glycerol, 0.01% Sodium azide and 0.05% BSA
Purification	Affinity Purification

Immunogen

Gene Name	PSENEN
Alternative Names	PEN 2; PSEN2; psenen
Gene ID	55851
SwissProt ID	Q9NZ42.

Application

Dilution Ratio	WB: 1:500-1:1000 IHC: 1:50-1:100 IF: 1:50-1:200
Molecular Weight	Calculated MW: 12 kDa; Observed MW: 12 kDa

Background

Product Name: PEN2 Rabbit Monoclonal Antibody
Catalog #: AMRe03142

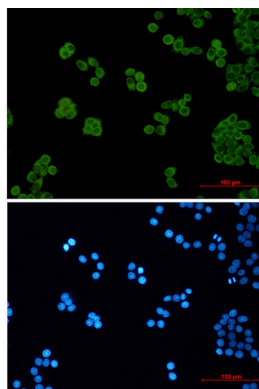


Essential subunit of the gamma-secretase complex, an endoprotease complex that catalyzes the intramembrane cleavage of integral membrane proteins such as Notch receptors and APP (beta-amyloid precursor protein).

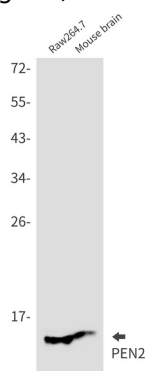
Research Area

Neuroscience

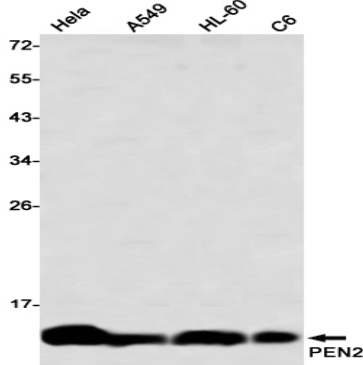
Image Data



Immunocytochemistry analysis of PEN2 (green) in Hela using PEN2 antibody, and DAPI (blue).

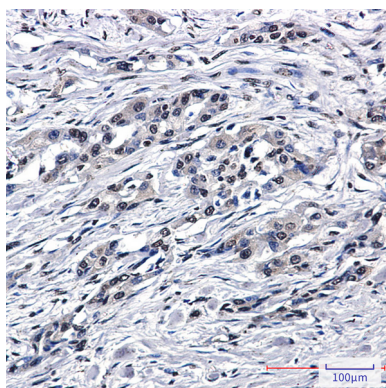


Western blot analysis of PEN2 in Raw264.7, mouse brain lysates using PEN2 antibody.



Western blot analysis of PEN2 in Hela, A549, HL-60, C6 lysates using PEN2 antibody

Product Name: PEN2 Rabbit Monoclonal Antibody
Catalog #: AMRe03142



Immunohistochemistry analysis of paraffin-embedded Human lung cancer using PEN2 antibody. High-pressure and temperature Sodium Citrate pH 6.0 was used for antigen retrieval.

Note

For research use only.