

**Product Name: Niemann Pick C2 Rabbit Monoclonal Antibody**  
**Catalog #: AMRe03112**

---



## Summary

<b>Production Name</b>	Niemann Pick C2 Rabbit Monoclonal Antibody
<b>Description</b>	Rabbit Monoclonal antibody
<b>Host</b>	Rabbit
<b>Application</b>	WB,IHC-F,IHC-P,ICC/IF
<b>Reactivity</b>	Human,Mouse,Rat

## Performance

<b>Conjugation</b>	Unconjugated
<b>Modification</b>	Unmodified
<b>Isotype</b>	IgG
<b>Clonality</b>	Monoclonal
<b>Form</b>	Liquid
<b>Storage</b>	Store at 4°C short term. Aliquot and store at -20°C long term. Avoid freeze/thaw cycles.
<b>Buffer</b>	50mM Tris-Glycine(pH 7.4), 0.15M NaCl, 40% Glycerol, 0.01% Sodium azide and 0.05% BSA
<b>Purification</b>	Affinity Purification

## Immunogen

<b>Gene Name</b>	NPC2
<b>Alternative Names</b>	HE1; EDDM1
<b>Gene ID</b>	10577
<b>SwissProt ID</b>	P61916.

## Application

<b>Dilution Ratio</b>	WB: 1:500-1:1000 IHC: 1:50-1:100 IF: 1:50-1:200
<b>Molecular Weight</b>	Calculated MW: 17 kDa; Observed MW: 17 kDa

**Product Name: Niemann Pick C2 Rabbit Monoclonal Antibody**  
**Catalog #: AMRe03112**



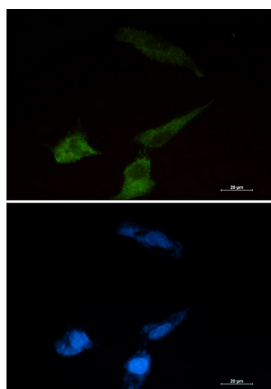
## Background

This gene encodes a protein containing a lipid recognition domain. The encoded protein may function in regulating the transport of cholesterol through the late endosomal/lysosomal system. Mutations in this gene have been associated with Niemann-Pick disease, type C2 and frontal lobe atrophy. [provided by RefSeq, Jul 2008]

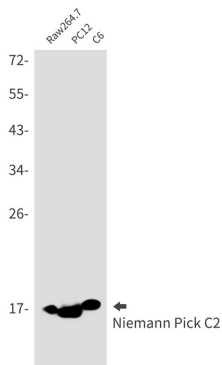
## Research Area

Cardiovascular

## Image Data



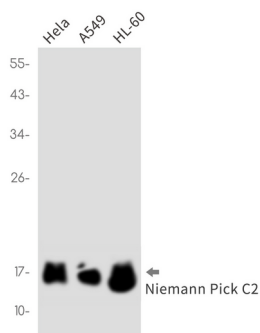
Immunocytochemistry analysis of Niemann Pick C2 (green) in U87-MG using Niemann Pick C2 antibody, and DAPI (blue).



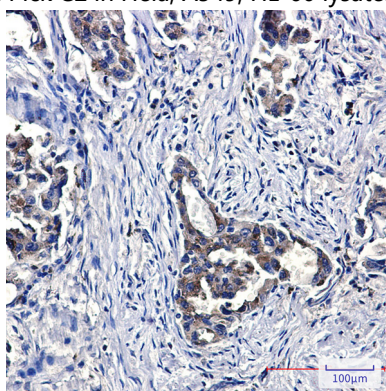
Western blot analysis of Niemann Pick C2 in Raw264.7, PC-12, C6 lysates using Niemann Pick C2 antibody.

**Product Name: Niemann Pick C2 Rabbit Monoclonal Antibody**  
**Catalog #: AMRe03112**

---



Western blot analysis of Niemann Pick C2 in HeLa, A549, HL-60 lysates using Niemann Pick C2 antibody



Immunohistochemistry analysis of paraffin-embedded Human lung cancer using Niemann Pick C2 antibody. High-pressure and temperature Sodium Citrate pH 6.0 was used for antigen retrieval.

## **Note**

For research use only.