

**Product Name: alpha Skeletal Muscle Actin Rabbit
Monoclonal Antibody
Catalog #: AMRe03100**

Summary

Production Name	alpha Skeletal Muscle Actin Rabbit Monoclonal Antibody
Description	Rabbit Monoclonal antibody
Host	Rabbit
Application	WB,IHC-F,IHC-P,ICC/IF,IP
Reactivity	Human,Rat,Hamster

Performance

Conjugation	Unconjugated
Modification	Unmodified
Isotype	IgG
Clonality	Monoclonal
Form	Liquid
Storage	Store at 4°C short term. Aliquot and store at -20°C long term. Avoid freeze/thaw cycles.
Buffer	50mM Tris-Glycine(pH 7.4), 0.15M NaCl, 40% Glycerol, 0.01% Sodium azide and 0.05% BSA
Purification	Affinity Purification

Immunogen

Gene Name	ACTA1
Alternative Names	ACTA1; ACTA; Actin; alpha skeletal muscle; Alpha-actin-1
Gene ID	58
SwissProt ID	P68133.

Application

Dilution Ratio	WB: 1:500-1:1000 IHC: 1:50-1:100 IF: 1:50-1:200 IP: 1:20
Molecular Weight	Calculated MW: 42 kDa; Observed MW: 42 kDa

**Product Name: alpha Skeletal Muscle Actin Rabbit
Monoclonal Antibody
Catalog #: AMRe03100**



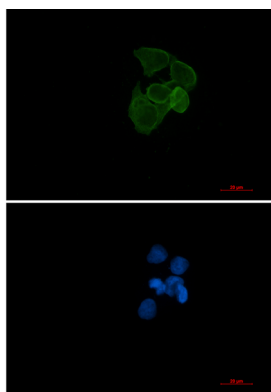
Background

Actins are highly conserved proteins that are involved in various types of cell motility and are ubiquitously expressed in all eukaryotic cells.

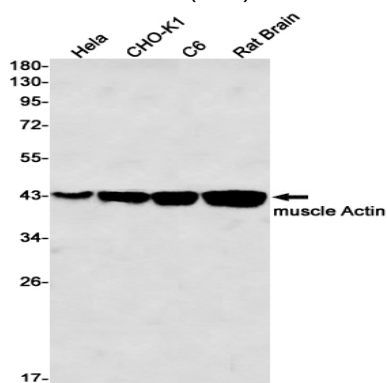
Research Area

Signal Transduction

Image Data

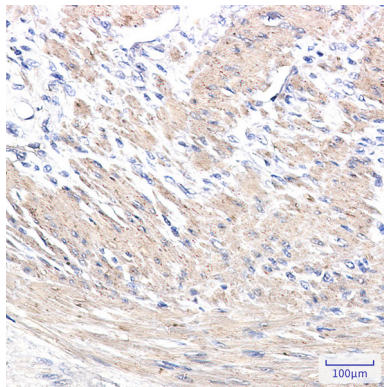


Immunocytochemistry analysis of alpha Skeletal Muscle Actin (green) in HeLa using alpha Skeletal Muscle Actin antibody, and DAPI (blue).



Western blot analysis of muscle Actin in HeLa, CHO-K1, C6, rat Brain lysates using muscle Actin antibody.

**Product Name: alpha Skeletal Muscle Actin Rabbit
Monoclonal Antibody
Catalog #: AMRe03100**



Immunohistochemistry analysis of paraffin-embedded Human colon cancer tissue using muscle Actin antibody. High-pressure and temperature Sodium Citrate pH 6.0 was used for antigen retrieval.

Note

For research use only.