

Product Name: LYRIC Rabbit Monoclonal Antibody
Catalog #: AMRe03072



Summary

Production Name	LYRIC Rabbit Monoclonal Antibody
Description	Rabbit Monoclonal antibody
Host	Rabbit
Application	WB,IHC-F,IHC-P,ICC/IF,IP
Reactivity	Human

Performance

Conjugation	Unconjugated
Modification	Unmodified
Isotype	IgG
Clonality	Monoclonal
Form	Liquid
Storage	Store at 4°C short term. Aliquot and store at -20°C long term. Avoid freeze/thaw cycles.
Buffer	50mM Tris-Glycine(pH 7.4), 0.15M NaCl, 40% Glycerol, 0.01% Sodium azide and 0.05% BSA
Purification	Affinity Purification

Immunogen

Gene Name	MTDH
Alternative Names	MTDH; AEG1; LYRIC; Protein LYRIC; 3D3/LYRIC; Astrocyte elevated gene-1 protein; AEG-1; Lysine-rich CEACAM1 co-isolated protein; Metadherin; Metastasis adhesion protein
Gene ID	92140
SwissProt ID	Q86UE4.

Application

Dilution Ratio	WB: 1:500-1:1000 IHC: 1:50-1:100 IF: 1:50-1:200 IP: 1:20
Molecular Weight	Calculated MW: 64 kDa; Observed MW: 75 kDa

Product Name: LYRIC Rabbit Monoclonal Antibody
Catalog #: AMRe03072



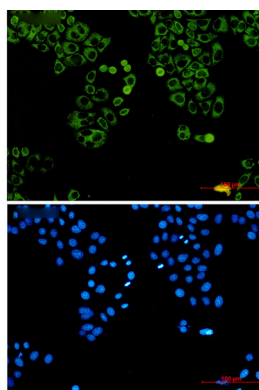
Background

Downregulates SLC1A2/EAAT2 promoter activity when expressed ectopically. Activates the nuclear factor kappa-B (NF-kappa-B) transcription factor. Promotes anchorage-independent growth of immortalized melanocytes and astrocytes which is a key component in tumor cell expansion.

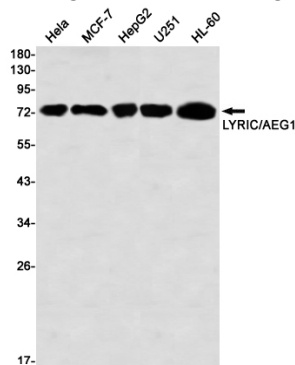
Research Area

Signal Transduction

Image Data

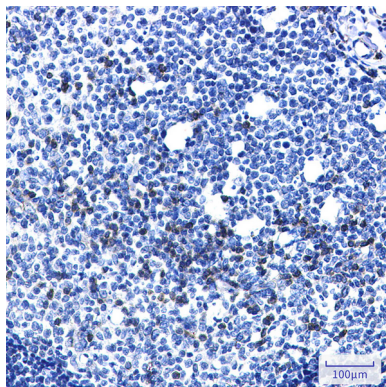


Immunocytochemistry analysis of LYRIC (green) in HeLa using LYRIC antibody, and DAPI (blue).



Western blot analysis of LYRIC/AEG1 in HeLa, MCF-7, HepG2, U251, HL-60 lysates using LYRIC/AEG1 antibody.

Product Name: LYRIC Rabbit Monoclonal Antibody
Catalog #: AMRe03072



Immunohistochemistry analysis of paraffin-embedded Human tonsil using LYRIC/AEG1 antibody. High-pressure and temperature Sodium Citrate pH 6.0 was used for antigen retrieval.

Note

For research use only.