

Product Name: Lamin A/C Rabbit Monoclonal Antibody
Catalog #: AMRe03062



Summary

Production Name	Lamin A/C Rabbit Monoclonal Antibody
Description	Rabbit Monoclonal antibody
Host	Rabbit
Application	WB,IHC-F,IHC-P,ICC/IF
Reactivity	Human,Mouse

Performance

Conjugation	Unconjugated
Modification	Unmodified
Isotype	IgG
Clonality	Monoclonal
Form	Liquid
Storage	Store at 4°C short term. Aliquot and store at -20°C long term. Avoid freeze/thaw cycles.
Buffer	50mM Tris-Glycine(pH 7.4), 0.15M NaCl, 40% Glycerol, 0.01% Sodium azide and 0.05% BSA
Purification	Affinity Purification

Immunogen

Gene Name	LMNA
Alternative Names	LMNA; LMN1; Prelamin-A/C
Gene ID	4000
SwissProt ID	P02545.

Application

Dilution Ratio	WB: 1:500-1:1000 IHC: 1:50-1:100 IF: 1:50-1:200
Molecular Weight	Calculated MW: 74 kDa; Observed MW: 74,63 kDa

Background

Product Name: Lamin A/C Rabbit Monoclonal Antibody
Catalog #: AMRe03062



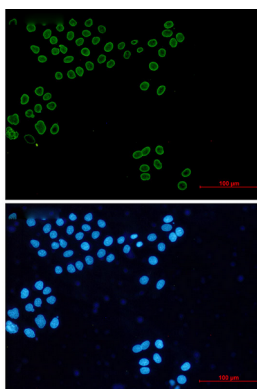
Lamins are components of the nuclear lamina, a fibrous layer on the nucleoplasmic side of the inner nuclear membrane, which is thought to provide a framework for the nuclear envelope and may also interact with chromatin. Lamin A and C are present in equal amounts in the lamina of mammals. Play an important role in nuclear assembly, chromatin organization, nuclear membrane and telomere dynamics.

Prelamin-A/C can accelerate smooth muscle cell senescence. It acts to disrupt mitosis and induce DNA damage in vascular smooth muscle cells (VSMCs), leading to mitotic failure, genomic instability, and premature senescence.

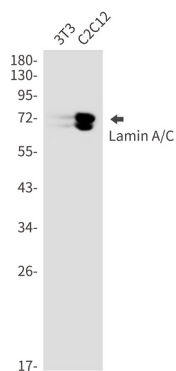
Research Area

Tags & Cell Markers

Image Data

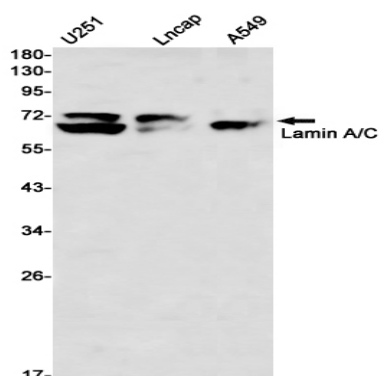


Immunocytochemistry analysis of Lamin A/C (green) in Hela using Lamin A/C antibody, and DAPI (blue).

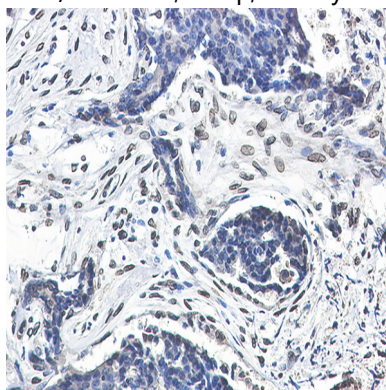


Western blot analysis of Lamin A/C in 3T3, C2C12 lysates using Lamin A/C antibody.

Product Name: Lamin A/C Rabbit Monoclonal Antibody
Catalog #: AMRe03062



Western blot analysis of Lamin A/C in U251, Lncap, A549 lysates using Lamin A/C antibody



Immunohistochemistry analysis of paraffin-embedded Human breast cancer using Lamin A/C antibody. High-pressure and temperature Sodium Citrate pH 6.0 was used for antigen retrieval.

Note

For research use only.