

**Product Name: KIFAP3 Rabbit Monoclonal Antibody**  
**Catalog #: AMRe03057**



## Summary

<b>Production Name</b>	KIFAP3 Rabbit Monoclonal Antibody
<b>Description</b>	Rabbit Monoclonal antibody
<b>Host</b>	Rabbit
<b>Application</b>	WB,IHC-P
<b>Reactivity</b>	Human,Rat

## Performance

<b>Conjugation</b>	Unconjugated
<b>Modification</b>	Unmodified
<b>Isotype</b>	IgG
<b>Clonality</b>	Monoclonal
<b>Form</b>	Liquid
<b>Storage</b>	Store at 4°C short term. Aliquot and store at -20°C long term. Avoid freeze/thaw cycles.
<b>Buffer</b>	50mM Tris-Glycine(pH 7.4), 0.15M NaCl, 40% Glycerol, 0.01% Sodium azide and 0.05% BSA
<b>Purification</b>	Affinity Purification

## Immunogen

<b>Gene Name</b>	KIFAP3
<b>Alternative Names</b>	KAP3; KIF3AP; Kifap3; Kinesin associated protein 3; SMAP
<b>Gene ID</b>	22920
<b>SwissProt ID</b>	Q92845.

## Application

<b>Dilution Ratio</b>	WB: 1:500-1:1000 IHC: 1:50-1:100
<b>Molecular Weight</b>	Calculated MW: 91 kDa; Observed MW: 91 kDa

## Background

**Product Name: KIFAP3 Rabbit Monoclonal Antibody**  
**Catalog #: AMRe03057**

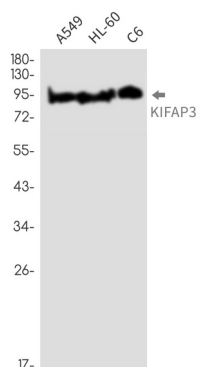


Involved in tethering the chromosomes to the spindle pole and in chromosome movement. Binds to the tail domain of the KIF3A/KIF3B heterodimer to form a heterotrimeric KIF3 complex and may regulate the membrane binding of this complex.

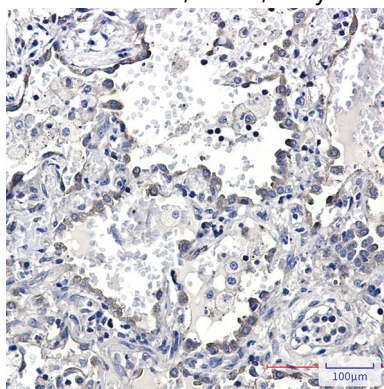
## Research Area

Epigenetics and Nuclear Signaling

## Image Data



Western blot analysis of KIFAP3 in A549, HL-60, C6 lysates using KIFAP3 antibody.



Immunohistochemistry analysis of paraffin-embedded Human lung cancer using KIFAP3 antibody. High-pressure and temperature Sodium Citrate pH 6.0 was used for antigen retrieval.

## Note

For research use only.