

**Product Name:** gamma Tubulin Rabbit Monoclonal Antibody  
**Catalog #:** AMRe03007

---

## Summary

<b>Production Name</b>	gamma Tubulin Rabbit Monoclonal Antibody
<b>Description</b>	Rabbit Monoclonal antibody
<b>Host</b>	Rabbit
<b>Application</b>	WB, ICC/IF, IP
<b>Reactivity</b>	Human, Mouse, Rat, Hamster

## Performance

<b>Conjugation</b>	Unconjugated
<b>Modification</b>	Unmodified
<b>Isotype</b>	IgG
<b>Clonality</b>	Monoclonal
<b>Form</b>	Liquid
<b>Storage</b>	Store at 4°C short term. Aliquot and store at -20°C long term. Avoid freeze/thaw cycles.
<b>Buffer</b>	50mM Tris-Glycine(pH 7.4), 0.15M NaCl, 40% Glycerol, 0.01% Sodium azide and 0.05% BSA
<b>Purification</b>	Affinity Purification

## Immunogen

<b>Gene Name</b>	TUBG1
<b>Alternative Names</b>	TUBG1; TUBG; Tubulin gamma-1 chain; Gamma-1-tubulin; Gamma-tubulin complex component 1; GCP-1
<b>Gene ID</b>	7283
<b>SwissProt ID</b>	P23258.

## Application

<b>Dilution Ratio</b>	WB: 1:500-1:1000 IF: 1:50-1:200 IP: 1:20
<b>Molecular Weight</b>	Calculated MW: 51 kDa; Observed MW: 51 kDa

**Product Name: gamma Tubulin Rabbit Monoclonal Antibody**  
**Catalog #: AMRe03007**

---



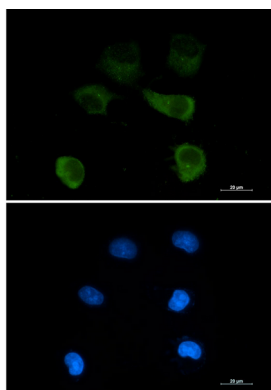
## Background

TUBG1 Tubulin is the major constituent of microtubules. Gamma tubulin is found at microtubule organizing centers (MTOC) such as the spindle poles or the centrosome. Pericentriolar matrix component that regulates alpha/beta tubulin minus-end nucleation, centrosome duplication and spindle formation. Interacts with GCP2 and GCP3. Interacts with B9D2. Interacts with CDK5RAP2;

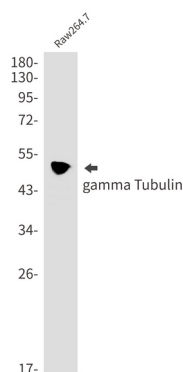
## Research Area

Signal Transduction

## Image Data



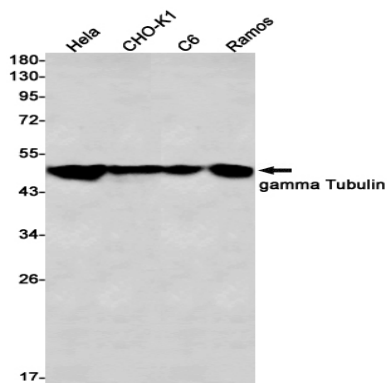
Immunocytochemistry analysis of gamma Tubulin (green) in HEPG2 using gamma Tubulin antibody, and DAPI (blue).



Western blot analysis of gamma Tubulin in Raw264.7 lysates using gamma Tubulin antibody.

**Product Name: gamma Tubulin Rabbit Monoclonal Antibody**  
**Catalog #: AMRe03007**

---



Western blot analysis of gamma Tubulin in HeLa, CHO-K1, C6, Ramos lysates using gamma Tubulin antibody

### **Note**

For research use only.