

**Product Name: FXR1 Rabbit Monoclonal Antibody**  
**Catalog #: AMRe03003**



## Summary

<b>Production Name</b>	FXR1 Rabbit Monoclonal Antibody
<b>Description</b>	Rabbit Monoclonal antibody
<b>Host</b>	Rabbit
<b>Application</b>	WB,IHC-F,IHC-P,ICC/IF
<b>Reactivity</b>	Human,Mouse,Rat

## Performance

<b>Conjugation</b>	Unconjugated
<b>Modification</b>	Unmodified
<b>Isotype</b>	IgG
<b>Clonality</b>	Monoclonal
<b>Form</b>	Liquid
<b>Storage</b>	Store at 4°C short term. Aliquot and store at -20°C long term. Avoid freeze/thaw cycles.
<b>Buffer</b>	50mM Tris-Glycine(pH 7.4), 0.15M NaCl, 40% Glycerol, 0.01% Sodium azide and 0.05% BSA
<b>Purification</b>	Affinity Purification

## Immunogen

<b>Gene Name</b>	FXR1
<b>Alternative Names</b>	FXR1; FXR1P; hFXR1p
<b>Gene ID</b>	8087
<b>SwissProt ID</b>	P51114.

## Application

<b>Dilution Ratio</b>	WB: 1:500-1:1000 IHC: 1:50-1:100 IF: 1:50-1:200
<b>Molecular Weight</b>	Calculated MW: 70 kDa; Observed MW: 70-80,82-84 kDa

## Background

**Product Name: FXR1 Rabbit Monoclonal Antibody**  
**Catalog #: AMRe03003**

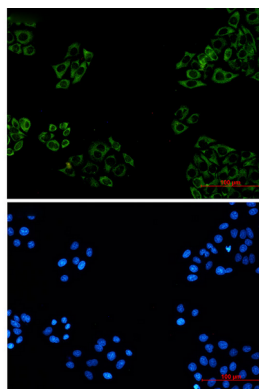


RNA-binding protein required for embryonic and postnatal development of muscle tissue. May regulate intracellular transport and local translation of certain mRNAs.

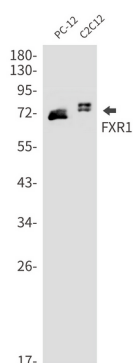
## Research Area

Immunology

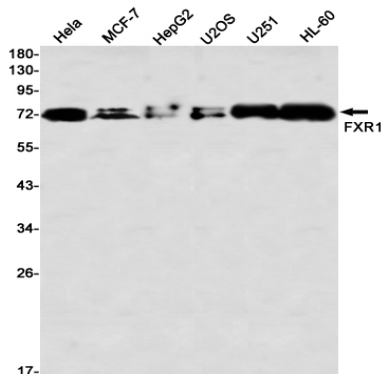
## Image Data



Immunocytochemistry analysis of FXR1 (green) in HeLa using FXR1 antibody, and DAPI (blue).



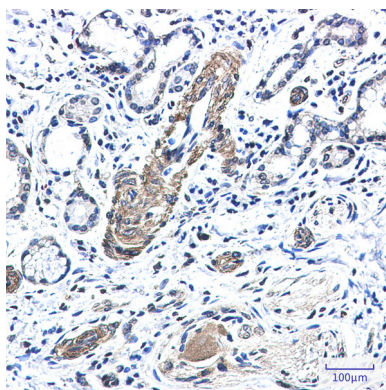
Western blot analysis of FXR1 in PC-12, C2C12 lysates using FXR1 antibody.



Western blot analysis of FXR1 in HeLa, MCF-7, HepG2, U2OS, U251, HL-60 lysates using FXR1 antibody

**Product Name: FXR1 Rabbit Monoclonal Antibody**  
**Catalog #: AMRe03003**

---



Immunohistochemistry analysis of paraffin-embedded Human lung cancer using FXR1 antibody. High-pressure and temperature Sodium Citrate pH 6.0 was used for antigen retrieval.

#### **Note**

For research use only.