

## Summary

<b>Production Name</b>	FKBP6 Rabbit Monoclonal Antibody
<b>Description</b>	Rabbit Monoclonal antibody
<b>Host</b>	Rabbit
<b>Application</b>	WB,IHC-P
<b>Reactivity</b>	Human,Mouse,Rat

## Performance

<b>Conjugation</b>	Unconjugated
<b>Modification</b>	Unmodified
<b>Isotype</b>	IgG
<b>Clonality</b>	Monoclonal
<b>Form</b>	Liquid
<b>Storage</b>	Store at 4°C short term. Aliquot and store at -20°C long term. Avoid freeze/thaw cycles.
<b>Buffer</b>	50mM Tris-Glycine(pH 7.4), 0.15M NaCl, 40% Glycerol, 0.01% Sodium azide and 0.05% BSA
<b>Purification</b>	Affinity Purification

## Immunogen

<b>Gene Name</b>	FKBP6
<b>Alternative Names</b>	FKBP36
<b>Gene ID</b>	8468
<b>SwissProt ID</b>	O75344.

## Application

<b>Dilution Ratio</b>	WB: 1:500-1:1000 IHC: 1:50-1:100
<b>Molecular Weight</b>	Calculated MW: 37 kDa; Observed MW: 37 kDa

## Background

**Product Name: FKBP6 Rabbit Monoclonal Antibody**  
**Catalog #: AMRe03001**

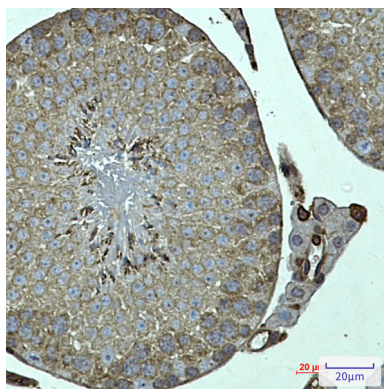


Co-chaperone required during spermatogenesis to repress transposable elements and prevent their mobilization, which is essential for the germline integrity.

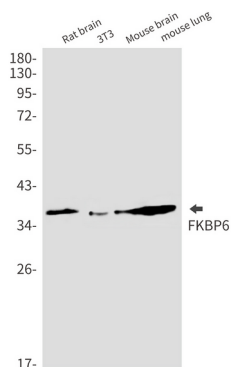
## Research Area

Immunology

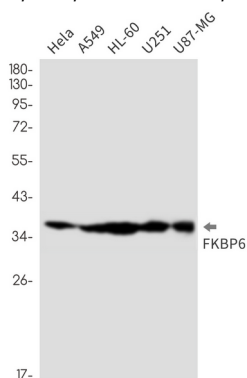
## Image Data



Immunohistochemistry analysis of paraffin-embedded mouse testis using FKBP6 antibody. High-pressure and temperature Sodium Citrate pH 6.0 was used for antigen retrieval.



Western blot analysis of FKBP6 in rat brain, 3T3, mouse brain, mouse lung lysates using FKBP6 antibody.



Western blot analysis of FKBP6 in HeLa, A549, HL-60, U251, U87-MG lysates using FKBP6 antibody

**Product Name: FKBP6 Rabbit Monoclonal Antibody**  
**Catalog #: AMRe03001**

---



**Note**

For research use only.