

## Summary

<b>Production Name</b>	FKBP52 Rabbit Monoclonal Antibody
<b>Description</b>	Rabbit Monoclonal antibody
<b>Host</b>	Rabbit
<b>Application</b>	WB,IHC-P
<b>Reactivity</b>	Human,Mouse,Rat

## Performance

<b>Conjugation</b>	Unconjugated
<b>Modification</b>	Unmodified
<b>Isotype</b>	IgG
<b>Clonality</b>	Monoclonal
<b>Form</b>	Liquid
<b>Storage</b>	Store at 4°C short term. Aliquot and store at -20°C long term. Avoid freeze/thaw cycles.
<b>Buffer</b>	50mM Tris-Glycine(pH 7.4), 0.15M NaCl, 40% Glycerol, 0.01% Sodium azide and 0.05% BSA
<b>Purification</b>	Affinity Purification

## Immunogen

<b>Gene Name</b>	FKBP4
<b>Alternative Names</b>	HBI; p52; Hsp56; FKBP51; FKBP52; FKBP59; PPlase
<b>Gene ID</b>	2288
<b>SwissProt ID</b>	Q02790.

## Application

<b>Dilution Ratio</b>	WB: 1:500-1:1000 IHC: 1:50-1:100
<b>Molecular Weight</b>	Calculated MW: 52 kDa; Observed MW: 52 kDa

## Background

**Product Name: FKBP52 Rabbit Monoclonal Antibody**  
**Catalog #: AMRe03000**

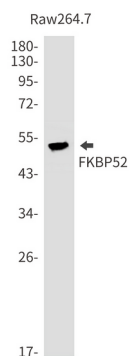


Immunophilin protein with PPlase and co-chaperone activities (By similarity). Component of unliganded steroid receptors heterocomplexes through interaction with heat-shock protein 90 (HSP90).

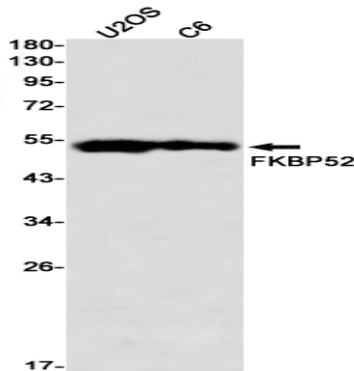
## Research Area

Signal Transduction

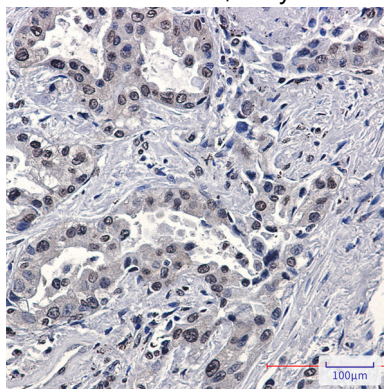
## Image Data



Western blot analysis of FKBP52 in Raw264.7 lysates using FKBP52 antibody.



Western blot analysis of FKBP52 in U2OS, C6 lysates using FKBP52 antibody.



Immunohistochemistry analysis of paraffin-embedded Human lung cancer using FKBP52 antibody. High-pressure and temperature Sodium Citrate pH 6.0 was used for antigen retrieval.

**Product Name: FKBP52 Rabbit Monoclonal Antibody**  
**Catalog #: AMRe03000**

---



**Note**

For research use only.