

**Product Name: Ephrin Receptor B1 Rabbit Monoclonal antibody**  
**Catalog #: AMRe02985**

---



## Summary

<b>Production Name</b>	Ephrin Receptor B1 Rabbit Monoclonal antibody
<b>Description</b>	Recombinant Rabbit Monoclonal antibody
<b>Host</b>	Rabbit
<b>Application</b>	WB,IP
<b>Reactivity</b>	Human

## Performance

<b>Conjugation</b>	Unconjugated
<b>Modification</b>	Unmodified
<b>Isotype</b>	IgG
<b>Clonality</b>	Monoclonal Antibody
<b>Form</b>	Liquid
<b>Storage</b>	Store at 4°C short term. Aliquot and store at -20°C long term. Avoid freeze/thaw cycles.
<b>Buffer</b>	50mM Tris-Glycine(pH 7.4), 0.15M NaCl, 40% Glycerol, 0.01% Sodium azide and 0.05% BSA
<b>Purification</b>	Affinity Purified

## Immunogen

<b>Gene Name</b>	EPHB1 EPHB1; ELK; EPHT2; HEK6; NET; Ephrin type-B receptor 1; ELK; EPH tyrosine kinase 2;
<b>Alternative Names</b>	EPH-like kinase 6; EK6; hEK6; Neuronally-expressed EPH-related tyrosine kinase; NET; Tyrosine-protein kinase receptor EPH-2
<b>Gene ID</b>	2047
<b>SwissProt ID</b>	P54762.

## Application

<b>Dilution Ratio</b>	WB: 1:500-1:1000 IP: 1:20
<b>Molecular Weight</b>	Calculated MW: 110 kDa; Observed MW: 135 kDa

**Product Name: Ephrin Receptor B1 Rabbit Monoclonal antibody**  
**Catalog #: AMRe02985**

---



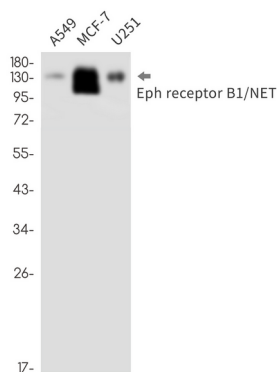
## Background

Receptor for members of the ephrin-B family. Binds to ephrin-B1, -B2 and -B3. Binding with the guidance cue ephrin-B2 at the optic chiasm midline redirect ventrotemporal (VT) retinal ganglion cells (RGCs) axons ipsilaterally. May be involved in cell-cell interactions in the nervous system.

## Research Area

Cardiovascular

## Image Data



Western blot analysis of Eph receptor B1/NET in A549, MCF-7, U251 lysates using Ephrin Receptor B1 antibody.

## Note

For research use only.