

**Product Name: Entactin Rabbit Monoclonal Antibody**  
**Catalog #: AMRe02984**



## Summary

<b>Production Name</b>	Entactin Rabbit Monoclonal Antibody
<b>Description</b>	Rabbit Monoclonal antibody
<b>Host</b>	Rabbit
<b>Application</b>	WB,IHC-P
<b>Reactivity</b>	Human

## Performance

<b>Conjugation</b>	Unconjugated
<b>Modification</b>	Unmodified
<b>Isotype</b>	IgG
<b>Clonality</b>	Monoclonal
<b>Form</b>	Liquid
<b>Storage</b>	Store at 4°C short term. Aliquot and store at -20°C long term. Avoid freeze/thaw cycles.
<b>Buffer</b>	50mM Tris-Glycine(pH 7.4), 0.15M NaCl, 40% Glycerol, 0.01% Sodium azide and 0.05% BSA
<b>Purification</b>	Affinity Purification

## Immunogen

<b>Gene Name</b>	NID1
<b>Alternative Names</b>	Enactin; Ent; Entactin 1; Entactin; NID 1; NID; Nid1; Nidogen 1; Nidogen
<b>Gene ID</b>	4811
<b>SwissProt ID</b>	P14543.

## Application

<b>Dilution Ratio</b>	WB: 1:500-1:1000 IHC: 1:50-1:100
<b>Molecular Weight</b>	Calculated MW: 136 kDa; Observed MW: 136 kDa

## Background

**Product Name: Entactin Rabbit Monoclonal Antibody**  
**Catalog #: AMRe02984**

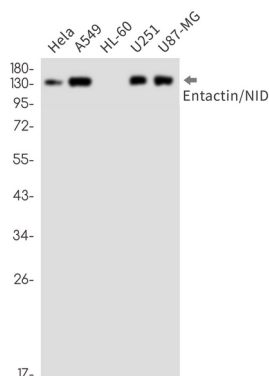


Sulfated glycoprotein widely distributed in basement membranes and tightly associated with laminin. Also binds to collagen IV and perlecan. It probably has a role in cell-extracellular matrix interactions.

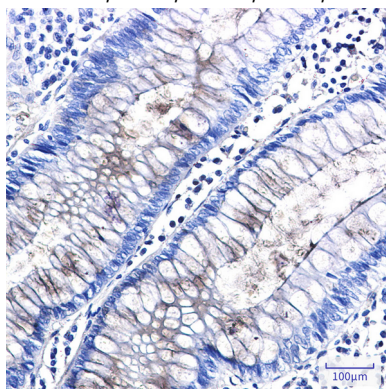
## Research Area

Signal Transduction

## Image Data



Western blot analysis of Entactin/NID in Hela, A549, HL-60, U251, U87-MG lysates using Entactin antibody.



Immunohistochemistry analysis of paraffin-embedded Human colon cancer using Entactin/NID antibody. High-pressure and temperature Sodium Citrate pH 6.0 was used for antigen retrieval.

## Note

For research use only.