

Product Name: Eg5 Rabbit Monoclonal Antibody
Catalog #: AMRe02981



Summary

Production Name	Eg5 Rabbit Monoclonal Antibody
Description	Rabbit Monoclonal antibody
Host	Rabbit
Application	WB, ICC/IF
Reactivity	Human, Mouse, Rat

Performance

Conjugation	Unconjugated
Modification	Unmodified
Isotype	IgG
Clonality	Monoclonal
Form	Liquid
Storage	Store at 4°C short term. Aliquot and store at -20°C long term. Avoid freeze/thaw cycles.
Buffer	50mM Tris-Glycine(pH 7.4), 0.15M NaCl, 40% Glycerol, 0.01% Sodium azide and 0.05% BSA
Purification	Affinity Purification

Immunogen

Gene Name	KIF11
Alternative Names	KIF11; EG5; KNSL1; TRIP5; Kinesin-like protein KIF11; Kinesin-like protein 1; Kinesin-like spindle protein HKSP; Kinesin-related motor protein Eg5; Thyroid receptor-interacting protein 5; TR-interacting protein 5; TRIP-5
Gene ID	3832
SwissProt ID	P52732.

Application

Dilution Ratio	WB: 1:500-1:1000 IF: 1:50-1:200
Molecular Weight	Calculated MW: 119 kDa; Observed MW: 119 kDa

Product Name: Eg5 Rabbit Monoclonal Antibody
Catalog #: AMRe02981



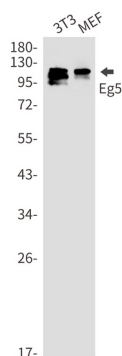
Background

Motor protein required for establishing a bipolar spindle. Blocking of KIF11 prevents centrosome migration and arrest cells in mitosis with monoastal microtubule arrays.

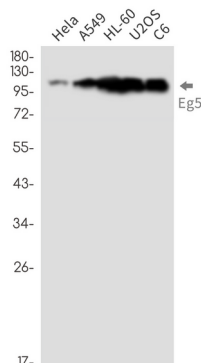
Research Area

Signal Transduction

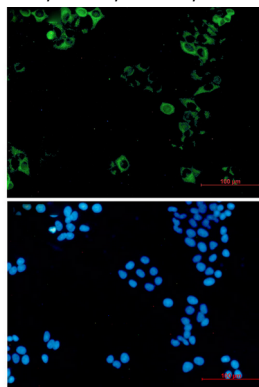
Image Data



Western blot analysis of Eg5 in 3T3, MEF lysates using Eg5 antibody.



Western blot analysis of Eg5 in Hela, A549, HL-60, U2OS, C6 lysates using Eg5 antibody.



Product Name: Eg5 Rabbit Monoclonal Antibody
Catalog #: AMRe02981



Immunocytochemistry analysis of Eg5 (green) in hela using Eg5 antibody, and DAPI(blue)

Note

For research use only.