

Product Name: c-Rel Rabbit Monoclonal antibody
Catalog #: AMRe02951



Summary

Production Name	c-Rel Rabbit Monoclonal antibody
Description	Recombinant Rabbit Monoclonal antibody
Host	Rabbit
Application	WB,IP
Reactivity	Human

Performance

Conjugation	Unconjugated
Modification	Unmodified
Isotype	IgG
Clonality	Monoclonal Antibody
Form	Liquid
Storage	Store at 4°C short term. Aliquot and store at -20°C long term. Avoid freeze/thaw cycles.
Buffer	50mM Tris-Glycine(pH 7.4), 0.15M NaCl, 40% Glycerol, 0.01% Sodium azide and 0.05% BSA
Purification	Affinity Purified

Immunogen

Gene Name	REL
Alternative Names	REL
Gene ID	5966
SwissProt ID	Q04864.

Application

Dilution Ratio	WB: 1:500-1:1000 IP: 1:20
Molecular Weight	Calculated MW: 69 kDa; Observed MW: 78 kDa

Background

c-Rel contains an amino-terminal DNA-binding domain referred to as the REL homology domain (REH) and carboxy-

Product Name: c-Rel Rabbit Monoclonal antibody
Catalog #: AMRe02951

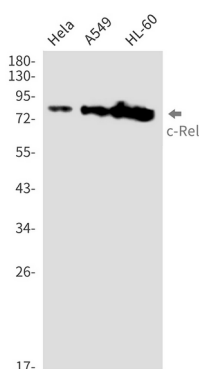


terminal transactivation domains. The c-Rel protein is typically inhibited in unstimulated cells by I κ B α and I κ B β . c-Rel expression is highest in hematopoietic cells with extensive research studies demonstrating its role in immune cell function and pathogenesis of disease.

Research Area

Signal Transduction

Image Data



Western blot analysis of c-Rel in HeLa, A549, HL-60 lysates using c-Rel antibody.

Note

For research use only.