

Product Name: CPS1 Rabbit Monoclonal Antibody
Catalog #: AMRe02950



Summary

Production Name	CPS1 Rabbit Monoclonal Antibody
Description	Rabbit Monoclonal antibody
Host	Rabbit
Application	WB,IHC-P,IP
Reactivity	Human

Performance

Conjugation	Unconjugated
Modification	Unmodified
Isotype	IgG
Clonality	Monoclonal
Form	Liquid
Storage	Store at 4°C short term. Aliquot and store at -20°C long term. Avoid freeze/thaw cycles.
Buffer	50mM Tris-Glycine(pH 7.4), 0.15M NaCl, 40% Glycerol, 0.01% Sodium azide and 0.05% BSA
Purification	Affinity Purification

Immunogen

Gene Name	CPS1
Alternative Names	Cps1; CPSase 1; CPSase I; CPSASE1; MS738
Gene ID	1373
SwissProt ID	P31327.

Application

Dilution Ratio	WB: 1:500-1:1000 IHC: 1:50-1:100 IP: 1:20
Molecular Weight	Calculated MW: 165 kDa; Observed MW: 160 kDa

Background

Product Name: CPS1 Rabbit Monoclonal Antibody
Catalog #: AMRe02950

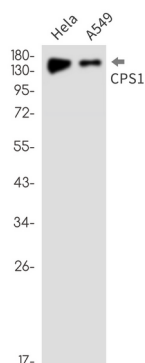


Involved in the urea cycle of ureotelic animals where the enzyme plays an important role in removing excess ammonia from the cell.

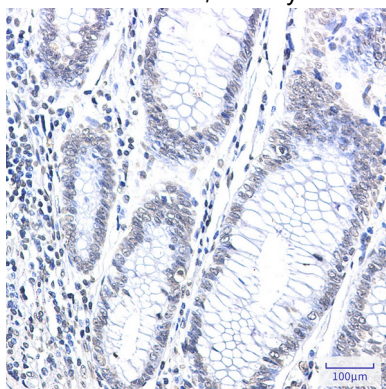
Research Area

Tags & Cell Markers

Image Data



Western blot analysis of CPS1 in HeLa, A549 lysates using CPS1 antibody.



Immunohistochemistry analysis of paraffin-embedded Human colon cancer using CPS1 antibody. High-pressure and temperature Sodium Citrate pH 6.0 was used for antigen retrieval.

Note

For research use only.