

**Product Name: Citrate Synthetase Rabbit Monoclonal Antibody**  
**Catalog #: AMRe02944**

---



## Summary

<b>Production Name</b>	Citrate Synthetase Rabbit Monoclonal Antibody
<b>Description</b>	Rabbit Monoclonal antibody
<b>Host</b>	Rabbit
<b>Application</b>	WB,IHC-F,IHC-P,ICC/IF,IP
<b>Reactivity</b>	Human,Rat

## Performance

<b>Conjugation</b>	Unconjugated
<b>Modification</b>	Unmodified
<b>Isotype</b>	IgG
<b>Clonality</b>	Monoclonal
<b>Form</b>	Liquid
<b>Storage</b>	Store at 4°C short term. Aliquot and store at -20°C long term. Avoid freeze/thaw cycles.
<b>Buffer</b>	50mM Tris-Glycine(pH 7.4), 0.15M NaCl, 40% Glycerol, 0.01% Sodium azide and 0.05% BSA
<b>Purification</b>	Affinity Purification

## Immunogen

<b>Gene Name</b>	CS
<b>Alternative Names</b>	Citrate synthase; Citrate synthase; mitochondrial; Cs
<b>Gene ID</b>	1431
<b>SwissProt ID</b>	O75390.

## Application

<b>Dilution Ratio</b>	WB: 1:500-1:1000 IHC: 1:50-1:100 IF: 1:50-1:200 IP: 1:20
<b>Molecular Weight</b>	Calculated MW: 52 kDa; Observed MW: 45 kDa

**Product Name: Citrate Synthetase Rabbit Monoclonal Antibody**  
**Catalog #: AMRe02944**



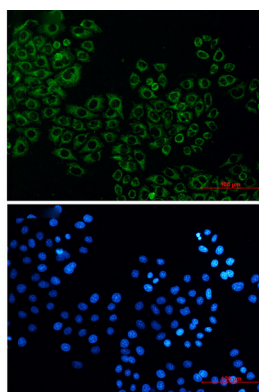
## Background

Carbohydrate metabolism; tricarboxylic acid cycle; isocitrate from oxaloacetate: step 1/2.

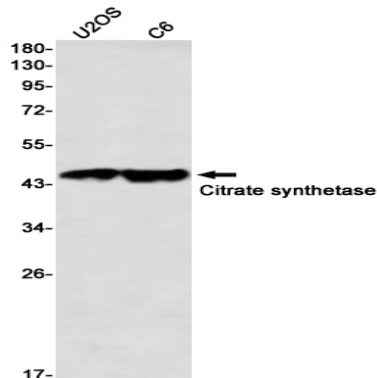
## Research Area

Signal Transduction

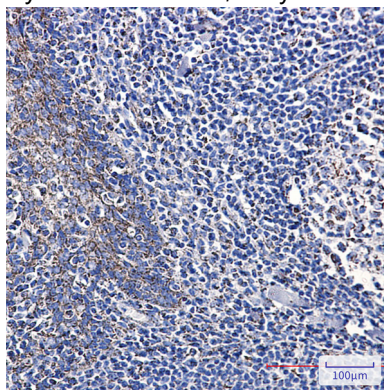
## Image Data



Immunocytochemistry analysis of Citrate Synthetase (green) in HeLa using Citrate Synthetase antibody, and DAPI (blue).



Western blot analysis of Citrate synthetase in U2OS, C6 lysates using Citrate synthetase antibody.



Immunohistochemistry analysis of paraffin-embedded Human tonsil using Citrate synthetase antibody. High-pressure and

**Product Name: Citrate Synthetase Rabbit Monoclonal  
Antibody**  
**Catalog #: AMRe02944**



---

temperature Sodium Citrate pH 6.0 was used for antigen retrieval.

**Note**

For research use only.