

Product Name: ATG10 Rabbit Monoclonal Antibody
Catalog #: AMRe02906



Summary

Production Name	ATG10 Rabbit Monoclonal Antibody
Description	Rabbit Monoclonal antibody
Host	Rabbit
Application	WB,IP
Reactivity	Human

Performance

Conjugation	Unconjugated
Modification	Unmodified
Isotype	IgG
Clonality	Monoclonal
Form	Liquid
Storage	Store at 4°C short term. Aliquot and store at -20°C long term. Avoid freeze/thaw cycles.
Buffer	50mM Tris-Glycine(pH 7.4), 0.15M NaCl, 40% Glycerol, 0.01% Sodium azide and 0.05% BSA
Purification	Affinity Purification

Immunogen

Gene Name	ATG10
Alternative Names	autophagy related 10; APG10; APG10L; pp12616
Gene ID	83734
SwissProt ID	Q9H0Y0.

Application

Dilution Ratio	WB: 1:500-1:1000 IP: 1:20
Molecular Weight	Calculated MW: 25 kDa; Observed MW: 25 kDa

Background

E2-like enzyme involved in autophagy. Acts as an E2-like enzyme that catalyzes the conjugation of ATG12 to ATG5. ATG12

Product Name: ATG10 Rabbit Monoclonal Antibody
Catalog #: AMRe02906

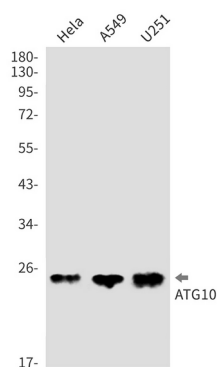


conjugation to ATG5 is required for autophagy. Likely serves as an ATG5-recognition molecule. Not involved in ATG12 conjugation to ATG3 (By similarity). Plays a role in adenovirus-mediated cell lysis.

Research Area

Cell Biology

Image Data



Western blot analysis of ATG10 in HeLa, A549, U251 lysates using ATG10 antibody.

Note

For research use only.