

**Product Name: ATF3 Rabbit Monoclonal antibody**  
**Catalog #: AMRe02904**



## Summary

<b>Production Name</b>	ATF3 Rabbit Monoclonal antibody
<b>Description</b>	Recombinant Rabbit Monoclonal antibody
<b>Host</b>	Rabbit
<b>Application</b>	WB,IP
<b>Reactivity</b>	Human

## Performance

<b>Conjugation</b>	Unconjugated
<b>Modification</b>	Unmodified
<b>Isotype</b>	IgG
<b>Clonality</b>	Monoclonal Antibody
<b>Form</b>	Liquid
<b>Storage</b>	Store at 4°C short term. Aliquot and store at -20°C long term. Avoid freeze/thaw cycles.
<b>Buffer</b>	50mM Tris-Glycine(pH 7.4), 0.15M NaCl, 40% Glycerol, 0.01% Sodium azide and 0.05% BSA
<b>Purification</b>	Affinity Purified

## Immunogen

<b>Gene Name</b>	ATF3
<b>Alternative Names</b>	activating transcription factor 3
<b>Gene ID</b>	467
<b>SwissProt ID</b>	P18847.

## Application

<b>Dilution Ratio</b>	WB: 1:500-1:1000 IP: 1:20
<b>Molecular Weight</b>	Calculated MW: 21 kDa; Observed MW: 21 kDa

## Background

This gene encodes a member of the mammalian activation transcription factor/cAMP responsive element-binding (CREB)

**Product Name: ATF3 Rabbit Monoclonal antibody**  
**Catalog #: AMRe02904**

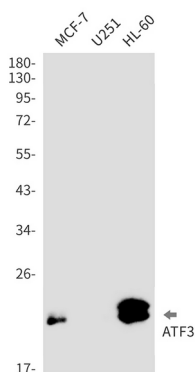


protein family of transcription factors. This gene is induced by a variety of signals, including many of those encountered by cancer cells, and is involved in the complex process of cellular stress response. Multiple transcript variants encoding different isoforms have been found for this gene. It is possible that alternative splicing of this gene may be physiologically important in the regulation of target genes. [provided by RefSeq, Apr 2011]

## Research Area

Epigenetics and Nuclear Signaling

## Image Data



Western blot analysis of ATF3 in MCF-7, U251, HL-60 lysates using ATF3 antibody.

## Note

For research use only.