

**Product Name: Phospho-RSK1 p90 (Ser380) Rabbit Monoclonal Antibody**  
**Catalog #: AMRe02874**

---

## Summary

<b>Production Name</b>	Phospho-RSK1 p90 (Ser380) Rabbit Monoclonal Antibody
<b>Description</b>	Rabbit Monoclonal antibody
<b>Host</b>	Rabbit
<b>Application</b>	WB,IP
<b>Reactivity</b>	Hamster,Mouse

## Performance

<b>Conjugation</b>	Unconjugated
<b>Modification</b>	Phosphorylated
<b>Isotype</b>	IgG
<b>Clonality</b>	Monoclonal
<b>Form</b>	Liquid
<b>Storage</b>	Store at 4°C short term. Aliquot and store at -20°C long term. Avoid freeze/thaw cycles.
<b>Buffer</b>	50mM Tris-Glycine(pH 7.4), 0.15M NaCl, 40% Glycerol, 0.01% Sodium azide and 0.05% BSA
<b>Purification</b>	Affinity Purification

## Immunogen

<b>Gene Name</b>	RPS6KA1
<b>Alternative Names</b>	RPS6KA1; MAPKAPK1A; RSK1; Ribosomal protein S6 kinase alpha-1; S6K-alpha-1; 90 kDa ribosomal protein S6 kinase 1; p90-RSK 1; p90RSK1; p90S6K; MAP kinase-activated protein kinase 1a; MAPK-activated protein kinase 1a; MAPKAP kinase 1a; MAPKAP
<b>Gene ID</b>	6195
<b>SwissProt ID</b>	Q15418.

## Application

<b>Dilution Ratio</b>	WB: 1:500-1:1000 IP: 1:20
<b>Molecular Weight</b>	Calculated MW: 83 kDa; Observed MW: 90 kDa

**Product Name: Phospho-RSK1 p90 (Ser380) Rabbit  
Monoclonal Antibody  
Catalog #: AMRe02874**

---



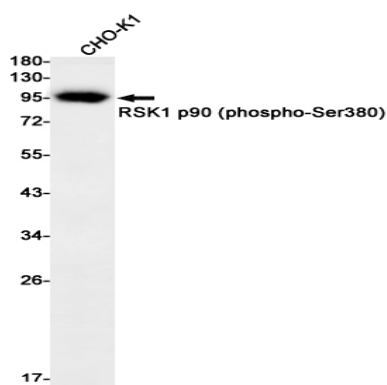
## Background

Rsk1 is a member of a family of 90kDa ribosomal protein S6 kinases, which includes Rsk1, Rsk2 and Rsk3. These are broadly expressed serine / threonine protein kinases activated in response to mitogenic stimuli, including extracellular signal regulated protein kinases Erk1 and Erk2. Rsk1 is activated by MAPK in vitro and in vivo via phosphorylation. Active Rsks appear to play a major role in transcriptional regulation by translocating to the nucleus and phosphorylating c-Fos and CREB.

## Research Area

Signal Transduction

## Image Data



Western blot analysis of RSK1 p90 (Phospho-Ser380) in CHO-K1 lysates using Phospho-RSK1 p90 (Ser380) antibody.

## Note

For research use only.