

Product Name: Phospho-Rb (Ser780) Rabbit Monoclonal Antibody
Catalog #: AMRe02872

Summary

Production Name	Phospho-Rb (Ser780) Rabbit Monoclonal Antibody
Description	Rabbit Monoclonal antibody
Host	Rabbit
Application	WB,IHC-P
Reactivity	Human,Rat

Performance

Conjugation	Unconjugated
Modification	Phosphorylated
Isotype	IgG
Clonality	Monoclonal
Form	Liquid
Storage	Store at 4°C short term. Aliquot and store at -20°C long term. Avoid freeze/thaw cycles.
Buffer	50mM Tris-Glycine(pH 7.4), 0.15M NaCl, 40% Glycerol, 0.01% Sodium azide and 0.05% BSA
Purification	Affinity Purification

Immunogen

Gene Name	RB1
Alternative Names	RB1; Retinoblastoma-associated protein; p105-Rb; pRb; Rb; pp110
Gene ID	5925
SwissProt ID	P06400.

Application

Dilution Ratio	WB: 1:500-1:1000 IHC: 1:50-1:100
Molecular Weight	Calculated MW: 106 kDa; Observed MW: 110 kDa

Product Name: Phospho-Rb (Ser780) Rabbit Monoclonal Antibody
Catalog #: AMRe02872

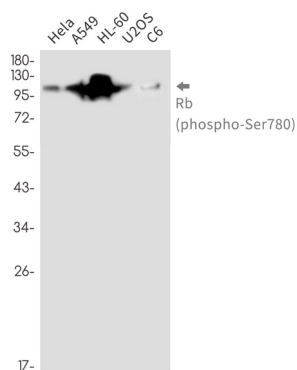
Background

Cell cycle-dependent phosphorylation by a CDK inhibits Rb target binding and allows cell cycle progression. Rb inactivation and subsequent cell cycle progression likely requires an initial phosphorylation by cyclin D-CDK4/6 followed by cyclin E-CDK2 phosphorylation. Specificity of different CDK/cyclin complexes has been observed in vitro and cyclin D1 is required for Ser780 phosphorylation in vivo.

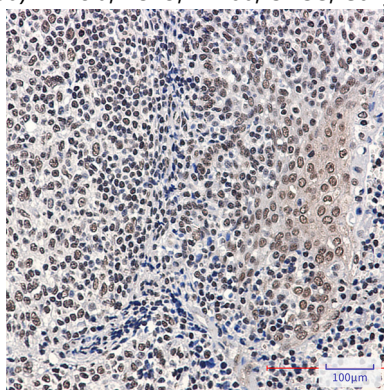
Research Area

Cell Biology

Image Data



Western blot analysis of Rb (Phospho-Ser780) in HeLa, A549, HL-60, U2OS, C6 lysates using Phospho-Rb (Ser780) antibody.



Immunohistochemistry analysis of paraffin-embedded Human tonsil using Rb (Phospho-Ser780) antibody. High-pressure and temperature Sodium Citrate pH 6.0 was used for antigen retrieval.

Note

For research use only.