

**Product Name: Phospho-IRE1 (Ser724) Rabbit
Monoclonal Antibody**
Catalog #: AMRe02857

Summary

Production Name	Phospho-IRE1 (Ser724) Rabbit Monoclonal Antibody
Description	Rabbit Monoclonal antibody
Host	Rabbit
Application	WB,IP
Reactivity	Human

Performance

Conjugation	Unconjugated
Modification	Phosphorylated
Isotype	IgG
Clonality	Monoclonal
Form	Liquid
Storage	Store at 4°C short term. Aliquot and store at -20°C long term. Avoid freeze/thaw cycles.
Buffer	50mM Tris-Glycine(pH 7.4), 0.15M NaCl, 40% Glycerol, 0.01% Sodium azide and 0.05% BSA
Purification	Affinity Purification

Immunogen

Gene Name	ERN1
Alternative Names	ERN1; IRE1; Serine/threonine-protein kinase/endoribonuclease IRE1; Endoplasmic reticulum-to-nucleus signaling 1; Inositol-requiring protein 1; hIRE1p; Ire1-alpha; IRE1a
Gene ID	2081
SwissProt ID	O75460.

Application

Dilution Ratio	WB: 1:500-1:1000 IP: 1:20
Molecular Weight	Calculated MW: 110 kDa; Observed MW: 110 kDa

**Product Name: Phospho-IRE1 (Ser724) Rabbit
Monoclonal Antibody**
Catalog #: AMRe02857

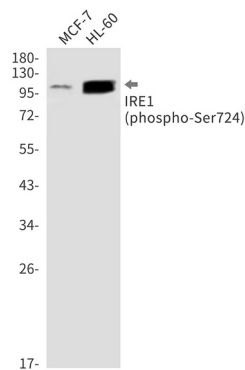
Background

Senses unfolded proteins in the lumen of the endoplasmic reticulum via its N-terminal domain which leads to enzyme auto-activation. The active endoribonuclease domain splices XBP1 mRNA to generate a new C-terminus, converting it into a potent unfolded-protein response transcriptional activator and triggering growth arrest and apoptosis.

Research Area

Signal Transduction

Image Data



Western blot analysis of Phospho-IRE1 (Ser724) in MCF-7, HL-60 lysates using Phospho-IRE1 (Ser724) antibody.

Note

For research use only.