

Product Name: SATB1 Rabbit Monoclonal antibody
Catalog #: AMRe02800



Summary

Production Name	SATB1 Rabbit Monoclonal antibody
Description	Recombinant Rabbit Monoclonal antibody
Host	Rabbit
Application	WB,IHC-P,IP
Reactivity	Human

Performance

Conjugation	Unconjugated
Modification	Unmodified
Isotype	IgG
Clonality	Monoclonal Antibody
Form	Liquid
Storage	Store at 4°C short term. Aliquot and store at -20°C long term. Avoid freeze/thaw cycles.
Buffer	50mM Tris-Glycine(pH 7.4), 0.15M NaCl, 40% Glycerol, 0.01% Sodium azide and 0.05% BSA
Purification	Affinity Purified

Immunogen

Gene Name	SATB1
Alternative Names	DNA-binding protein SATB1 (Special AT-rich sequence-binding protein 1)
Gene ID	6304
SwissProt ID	Q01826.

Application

Dilution Ratio	WB: 1:500-1:1000 IHC: 1:50-1:100 IP: 1:20
Molecular Weight	Calculated MW: 86 kDa; Observed MW: 100 kDa

Background

Product Name: SATB1 Rabbit Monoclonal antibody
Catalog #: AMRe02800

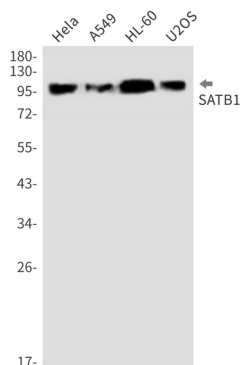


SATB1 is a crucial silencing factor contributing to the initiation of X inactivation mediated by Xist RNA that occurs during embryogenesis and in lymphoma (By similarity). Binds to DNA at special AT-rich sequences, the consensus SATB1-binding sequence (CSBS), at nuclear matrix- or scaffold-associated regions. Thought to recognize the sugar-phosphate structure of double-stranded DNA. Transcriptional repressor controlling nuclear and viral gene expression in a phosphorylated and acetylated status-dependent manner, by binding to matrix attachment regions (MARs) of DNA and inducing a local chromatin-loop remodeling.

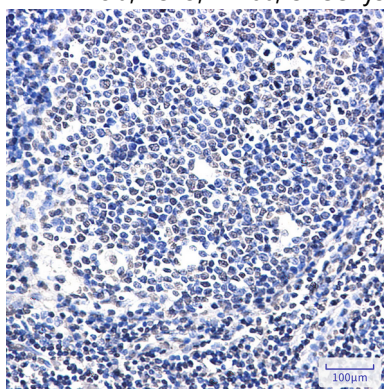
Research Area

Epigenetics and Nuclear Signaling

Image Data



Western blot analysis of SATB1 in HeLa, A549, HL-60, U2OS lysates using SATB1 antibody.



Immunohistochemistry analysis of paraffin-embedded Human tonsil using SATB1 antibody. High-pressure and temperature Sodium Citrate pH 6.0 was used for antigen retrieval.

Note

For research use only.