

**Product Name: XLF Rabbit Monoclonal antibody**  
**Catalog #: AMRe02778**



---

## Summary

<b>Production Name</b>	XLF Rabbit Monoclonal antibody
<b>Description</b>	Recombinant Rabbit Monoclonal antibody
<b>Host</b>	Rabbit
<b>Application</b>	WB
<b>Reactivity</b>	Human,Mouse,Rat

## Performance

<b>Conjugation</b>	Unconjugated
<b>Modification</b>	Unmodified
<b>Isotype</b>	IgG
<b>Clonality</b>	Monoclonal Antibody
<b>Form</b>	Liquid
<b>Storage</b>	Store at 4°C short term. Aliquot and store at -20°C long term. Avoid freeze/thaw cycles.
<b>Buffer</b>	50mM Tris-Glycine(pH 7.4), 0.15M NaCl, 40% Glycerol, 0.01% Sodium azide and 0.05% BSA
<b>Purification</b>	Affinity Purified

## Immunogen

<b>Gene Name</b>	NHEJ1
<b>Alternative Names</b>	Cernunno; Nhej1; Non homologous end joining factor 1; Protein cernunnos; XLF; XRCC4 like factor
<b>Gene ID</b>	79840
<b>SwissProt ID</b>	Q9H9Q4.

## Application

<b>Dilution Ratio</b>	WB: 1:500-1:1000
<b>Molecular Weight</b>	Calculated MW: 33 kDa; Observed MW: 39 kDa

## Background

---

**Product Name: XLF Rabbit Monoclonal antibody**  
**Catalog #: AMRe02778**

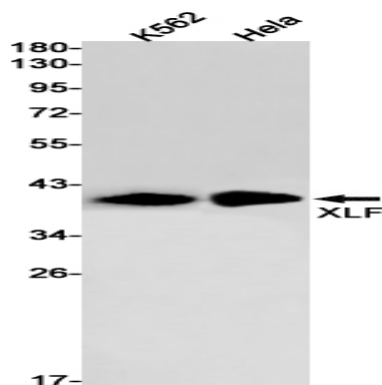


DNA repair protein involved in DNA nonhomologous end joining (NHEJ) required for double-strand break (DSB) repair and V(D)J recombination.

## Research Area

Epigenetics and Nuclear Signaling

## Image Data



Western blot analysis of XLF in K562, HeLa lysates using XLF antibody.

## Note

For research use only.